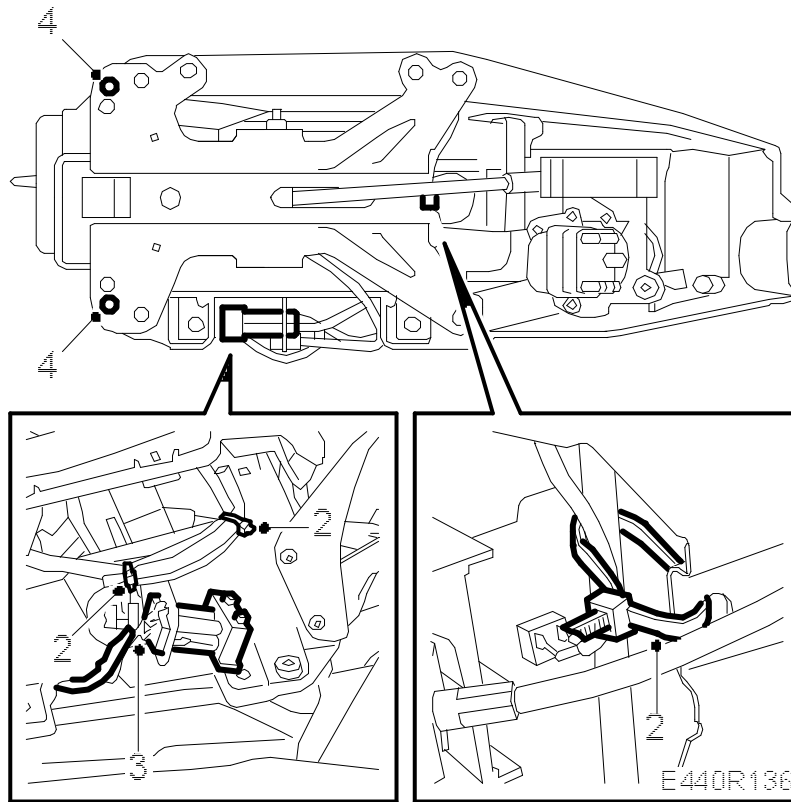


## Shift-lock electromagnet

### To remove



1. Remove the selector lever housing, see ➔ .

---

### Important

The selector lever housing must be protected with foam rubber or similar when being worked on when dismantled.

---

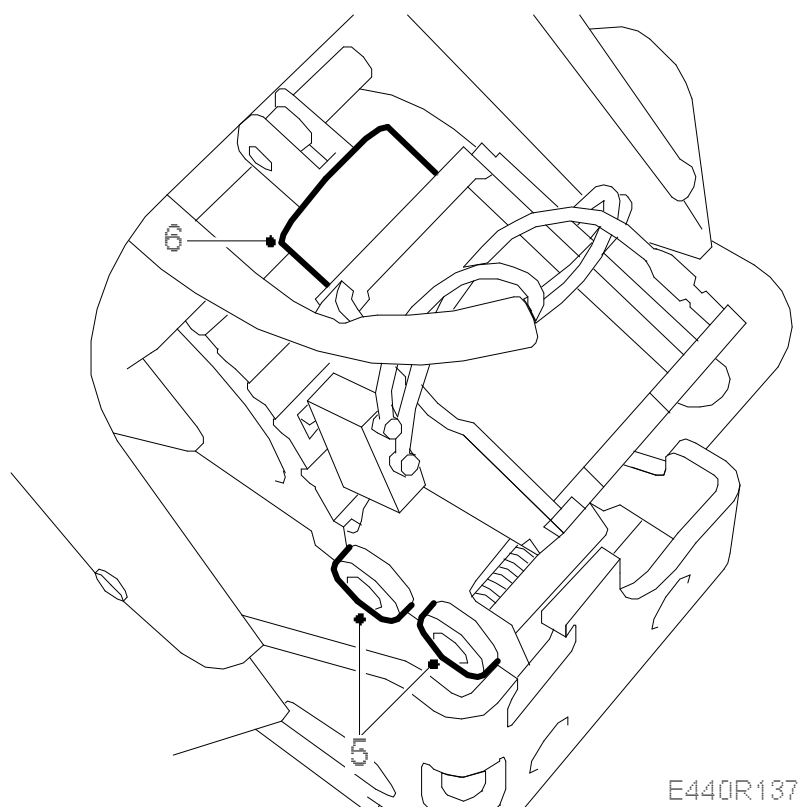
2. Snip the cable ties.
3. Extract the pins for the electromagnet from the connector, pins 5, 6 and 2. Use removal tool 85 80 151.

### Note

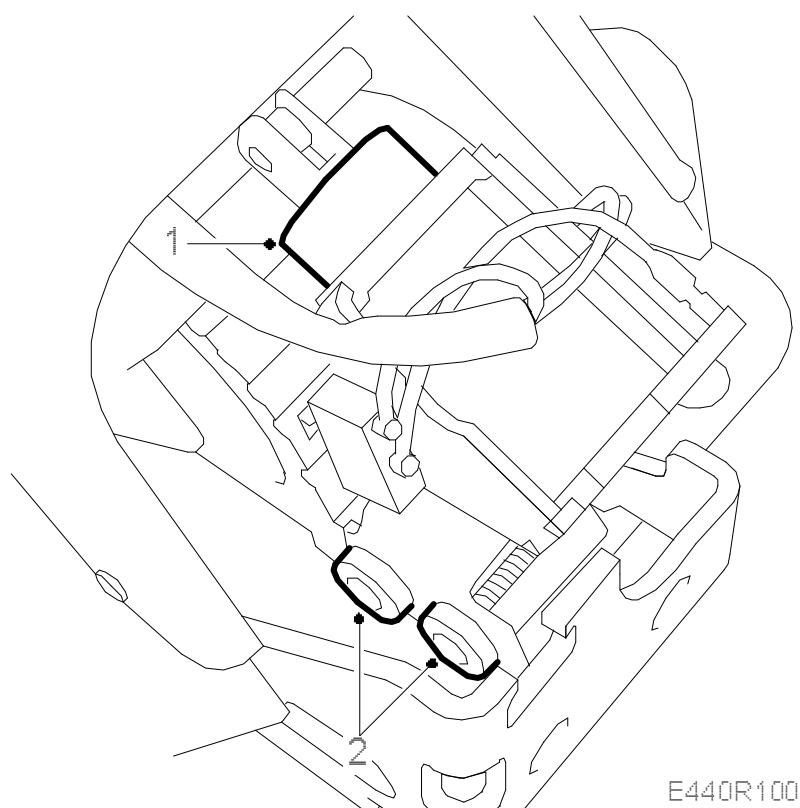
Note the position of the 3 pins in the connector.

4. Drill out the rivets that join the upper and lower part of the selector housing with a three millimetre drill bit.
5. Separate the upper and lower parts of the selector lever housing and remove the

screws by the electromagnet.

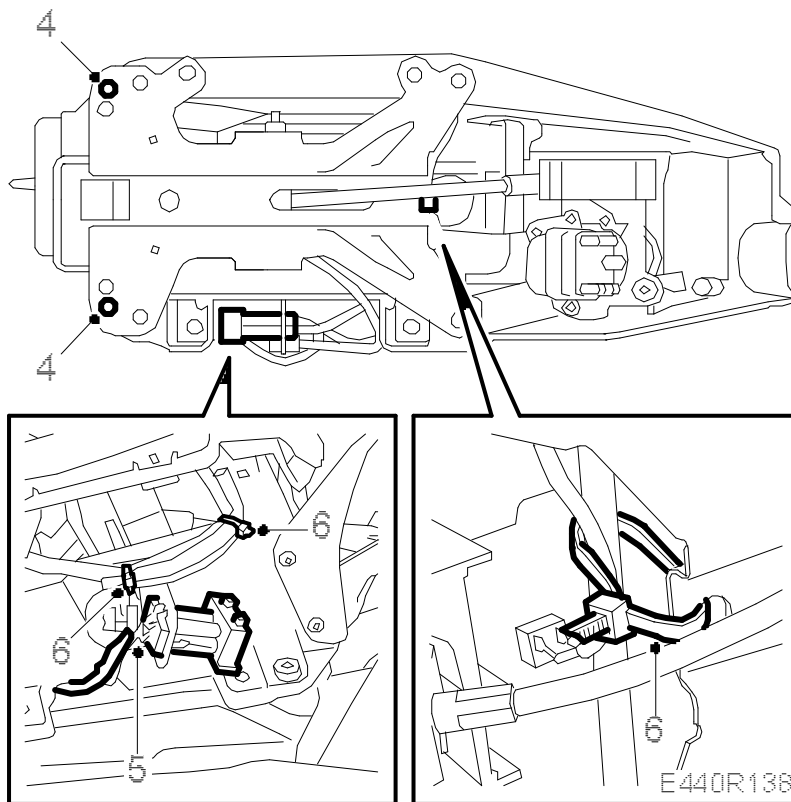


6. Remove the lever from the top of the electromagnet and remove the electromagnet.



1. Fit the electromagnet to the lever.
2. Fit the electromagnet's two screws.
- 3.

Fit the two parts of the selector lever housing together.



4. The selector lever housing does need to be riveted together.
5. Connect the electromagnet leads.
6. Secure the leads with cable ties.
7. Fit the selector lever housing, see ➡ .