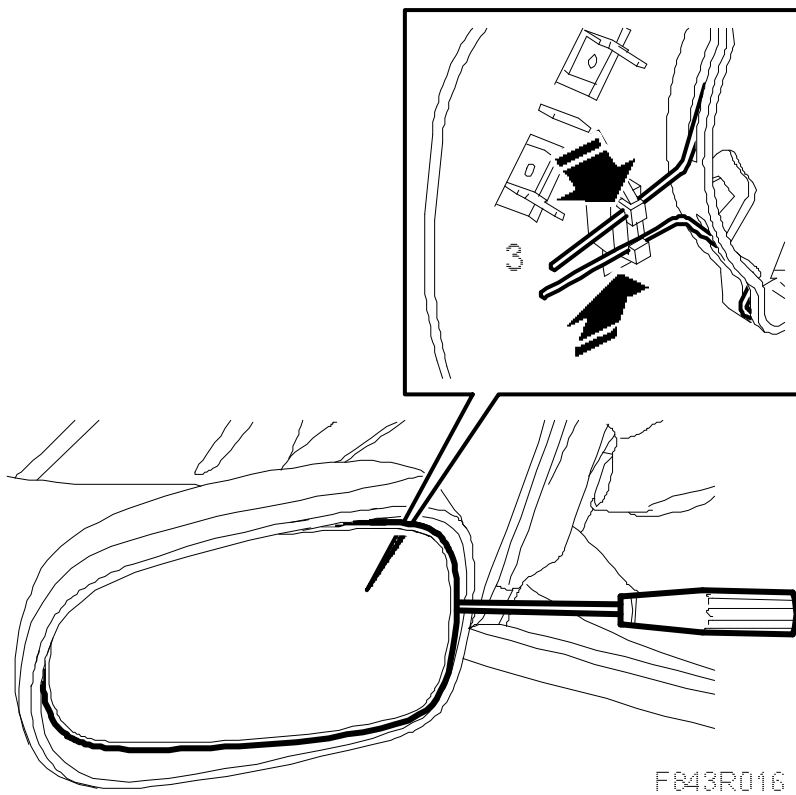


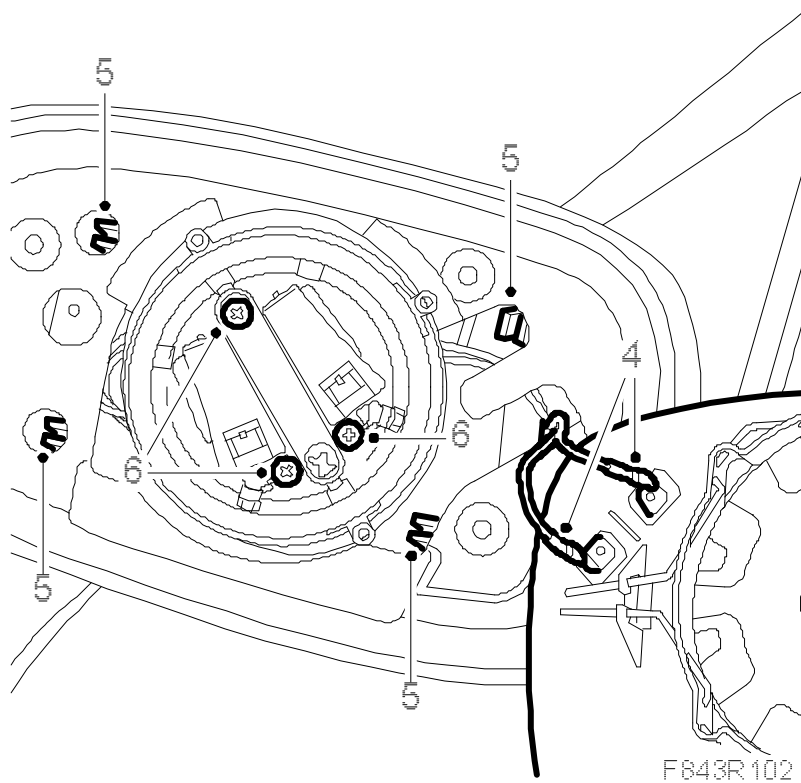
Door mirror, frame**To remove**

1. Fold the door mirror forward.
2. Angle out the glass.
3. Lift off the lock spring from the mounting using a chisel.



4.

Unplug the connectors and lift away the glass.



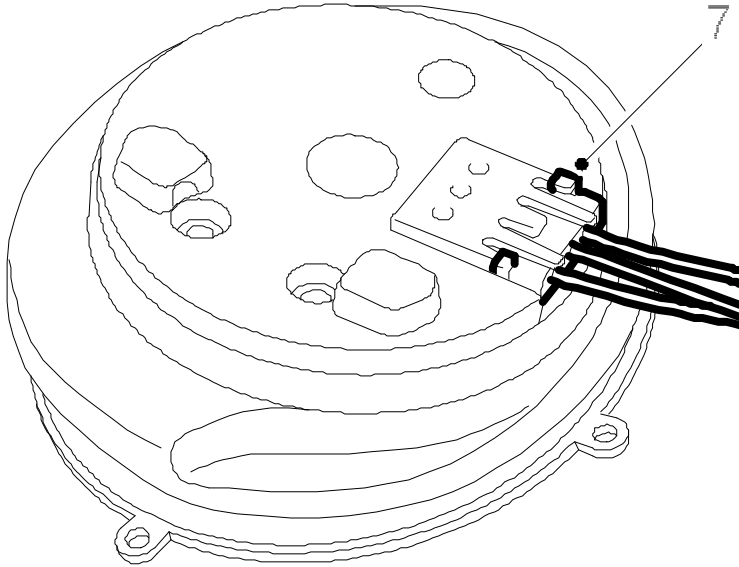
5. Press in the cover clips so that they release. Begin with the outer clips. On certain cars, the clips could be glued, which makes removal more difficult.

Fold in the mirror and pull off the cover.

6. Remove the motor bolts.

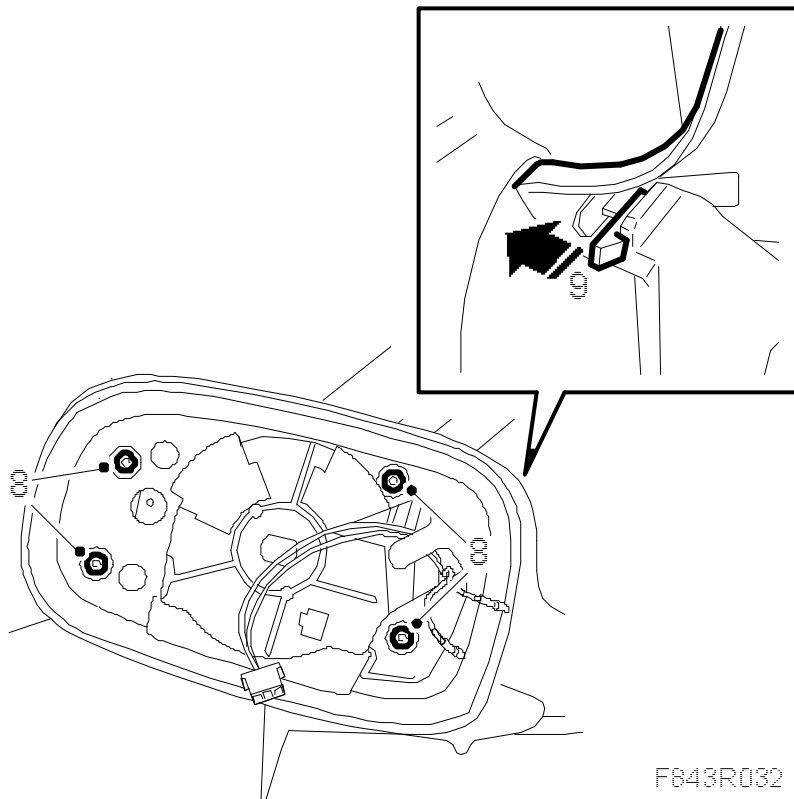
- 7.

Lift out the motor and unplug the connector.



F843R021

8. Remove the frame bolts.



F843R032

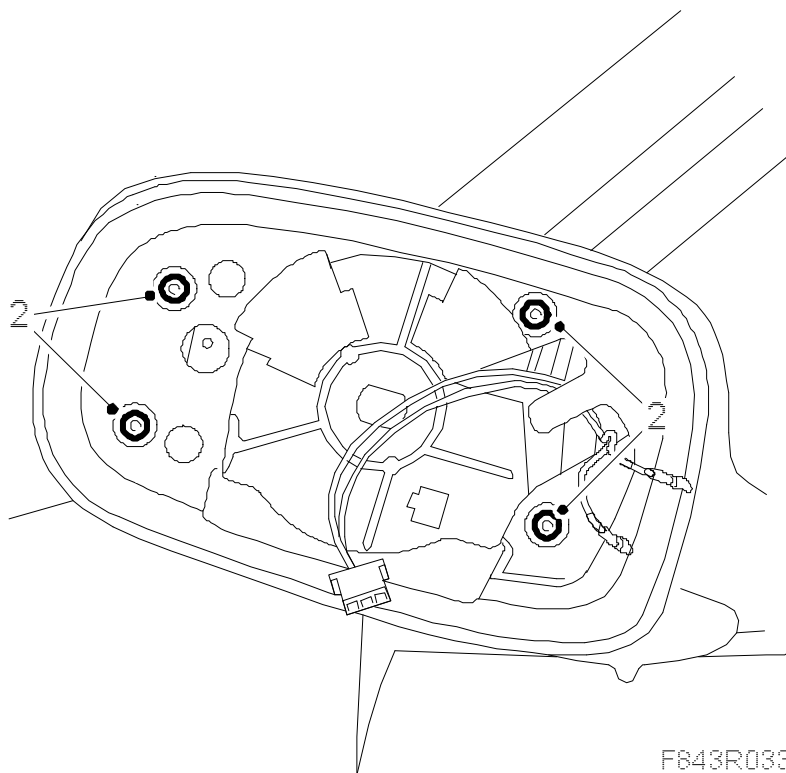
9. Bend aside the plastic catch so that the frame releases.

To fit

1. **On cars with glued clips:** Remove old glue residue.

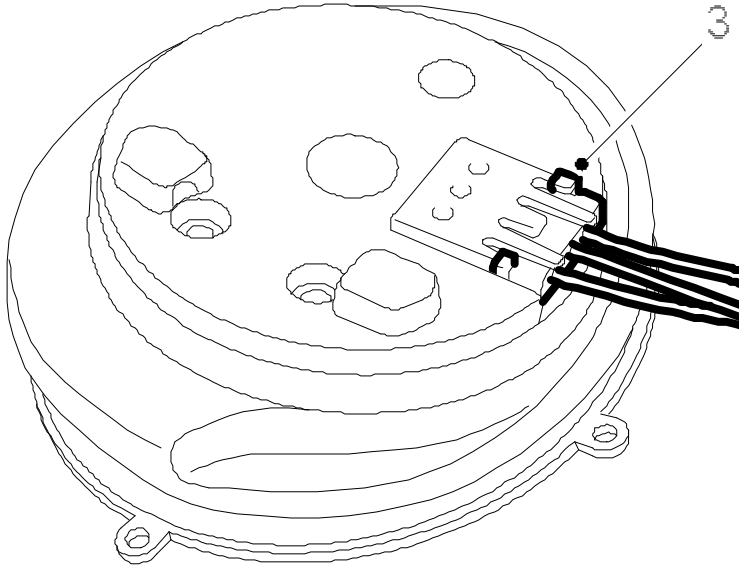
Fit the frame so that the clip catches.

2. Fit the frame bolts.



- 3.

Plug in the connector.

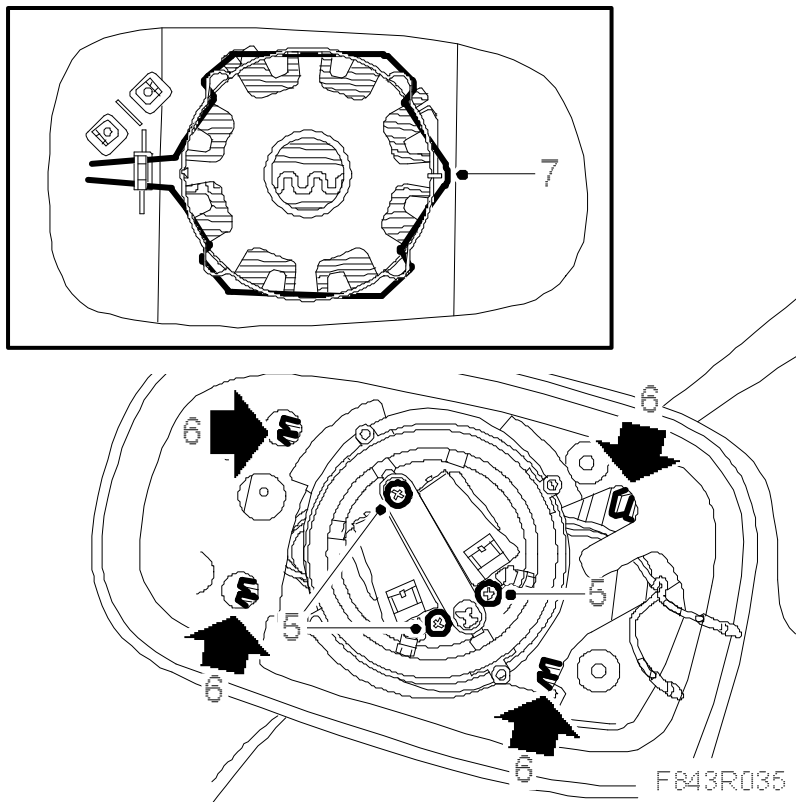


F843R034

4. Refit the motor.

5.

Fit the motor bolts.



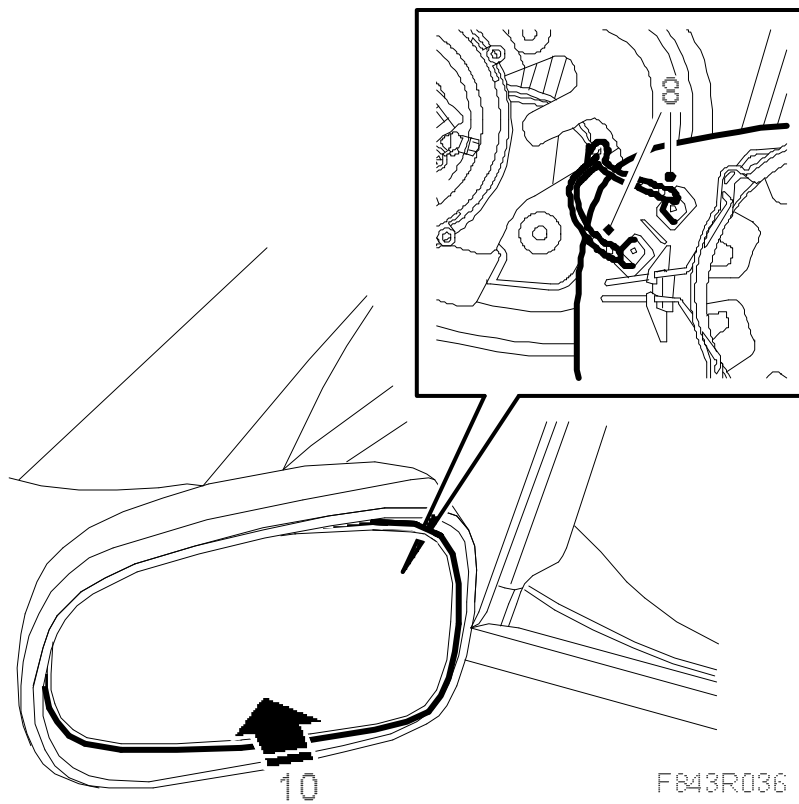
6. Press the cover into place.

Fold the door mirror forward and check that the clips hold in the holes.

7. Make sure that the lock springs of the glass are correctly positioned.

8.

Plug in the mirror connectors.



9. Position the glass against the motor.
10. Carefully press the glass until it audibly clicks into place.
11. Check the function of the door mirror.