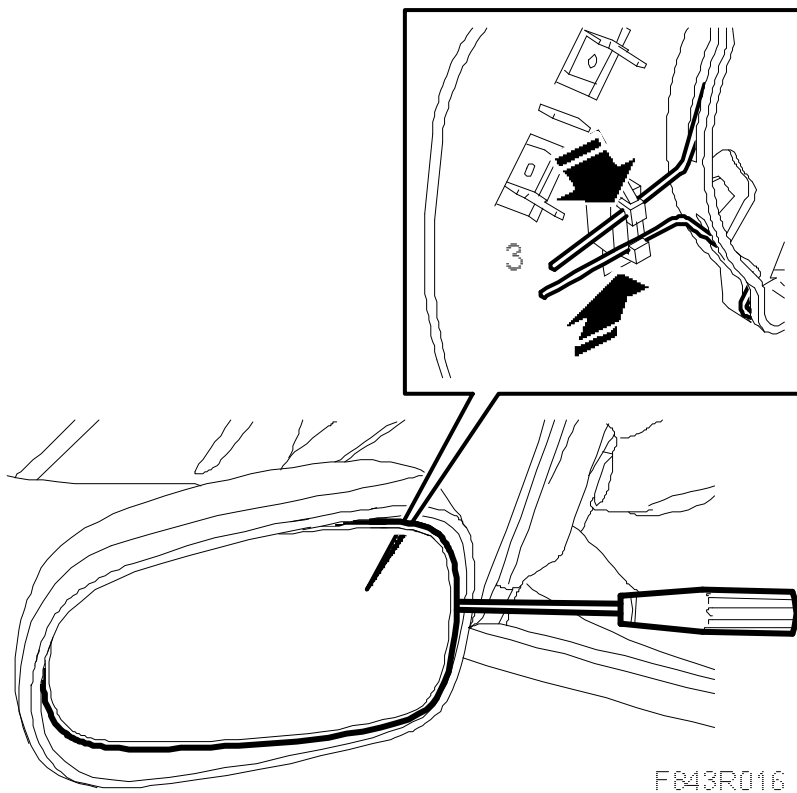


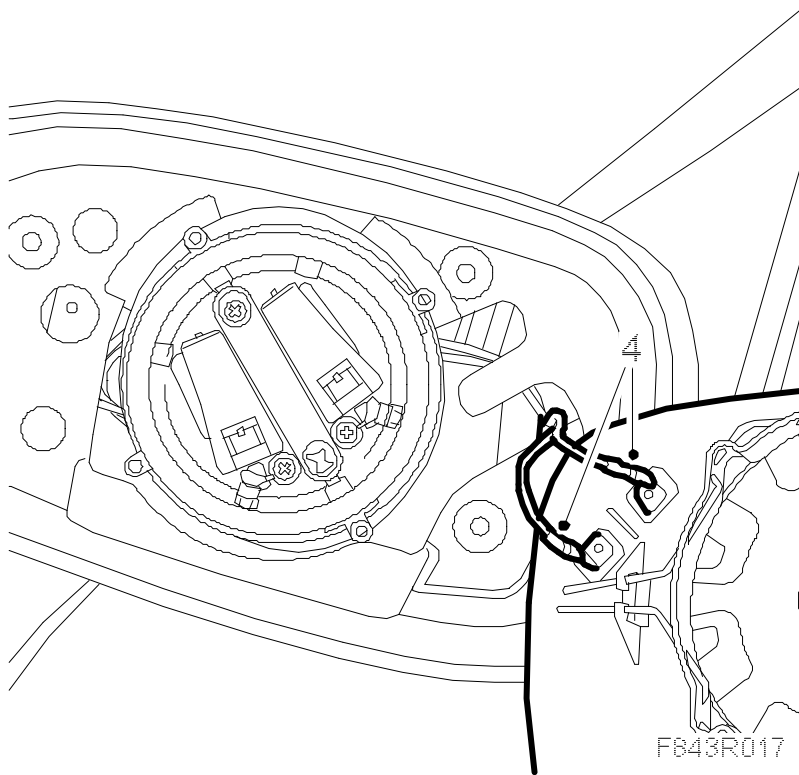
Door mirror cover**To remove**

1. Fold the door mirror forward.
2. Angle out the glass.
3. Unhook the spring clip using a screwdriver.

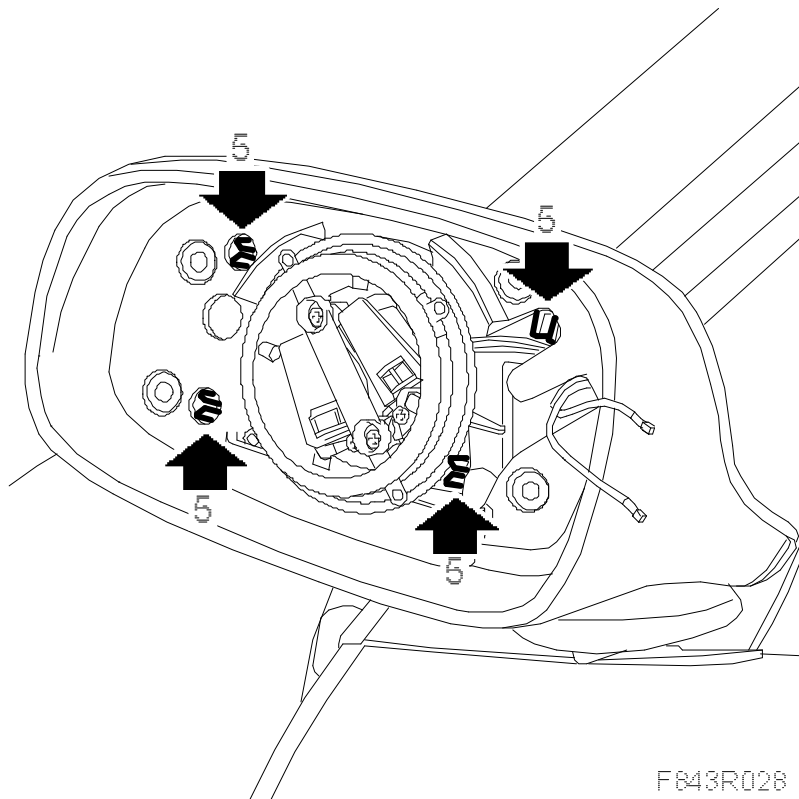


- 4.

Unplug the connector and lift aside the glass.



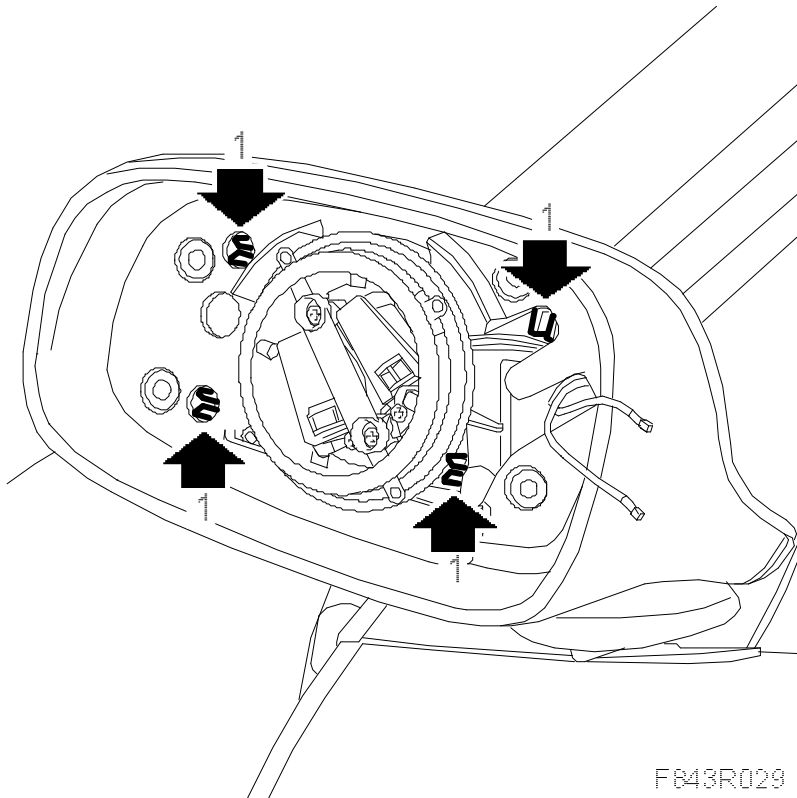
5. Press in the clips on the cover to release it. Start with the outer clips.



6. Fold in the door mirror.
7. Pull off the cover.

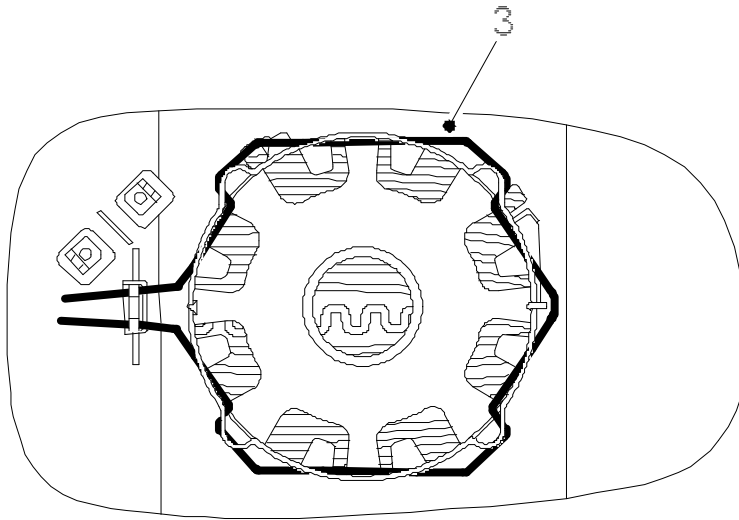
To fit

1. Press on the cover.



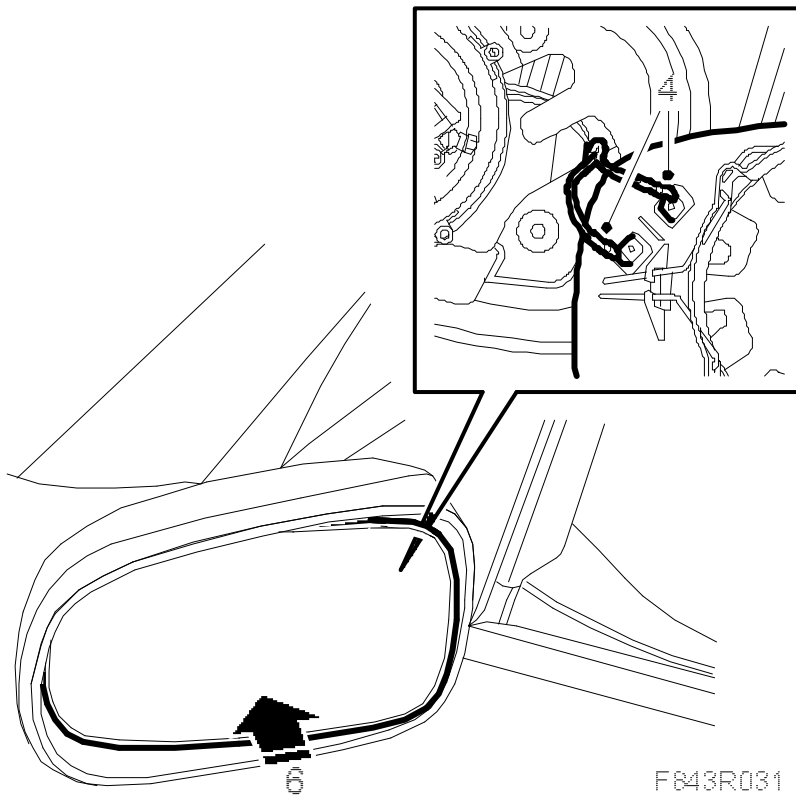
2. Fold the door mirror forward and check that the clips have engaged in their holes.
- 3.

Make sure that the spring clips on the glass are correctly positioned.



F843R030

4. Plug in the mirror connector.



F843R031

5. Fit the glass to the motor.
6. Carefully press in the glass until you hear a click.
7. Fold back the door mirror.
8. Check the function of the door mirror.