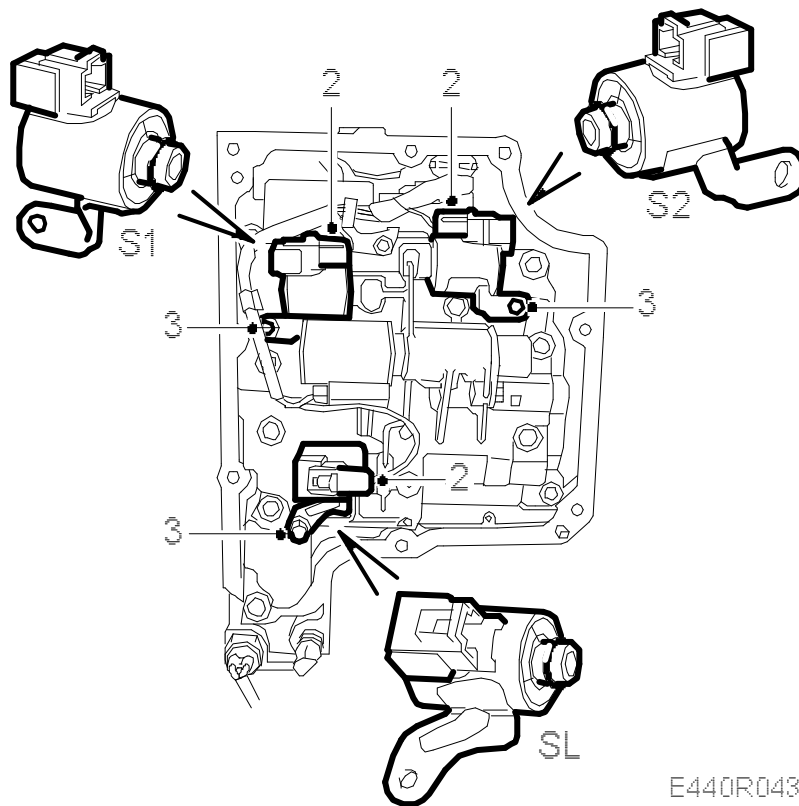


Solenoid

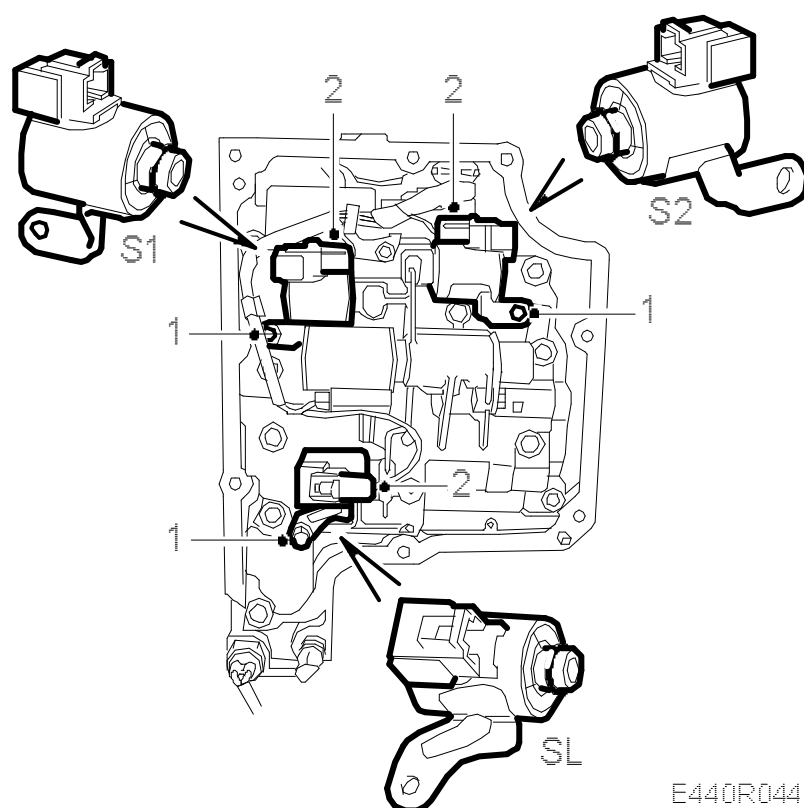
To remove



Important

Solenoid ST, which controls system pressure, must not be removed!

1. Remove the valve housing cover. see ➔ .
2. Unplug the relevant solenoid's connector.
3. Remove the solenoid's retaining bolt.
4. Prise the solenoid loose, using a screwdriver.



E440R044

1. Position the solenoid and tighten the bolt.

Tightening torque: 7 Nm (5 lbf ft).

2. Plug in the solenoid's connector.
3. Fit the valve housing cover, see ➡ .