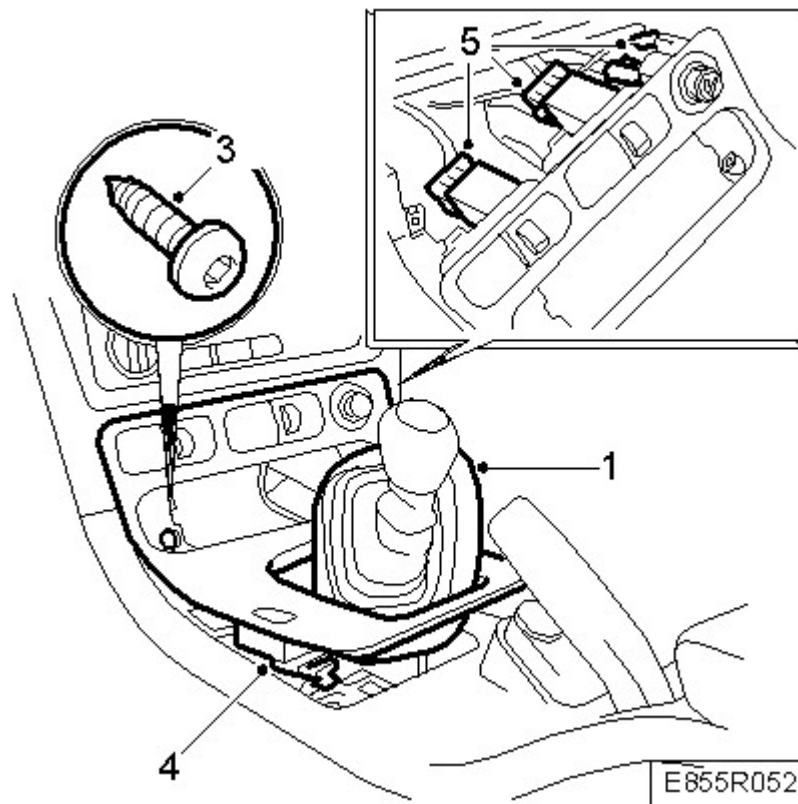


## Gaiter on handbrake lever

### To remove



1. **Manual gearbox:** Lift up the gear lever gaiter.  
**Automatic transmission:** Remove the rim with a small screwdriver.
2. Remove the compartment or, alternatively, the [ashtray](#) with holder using a screwdriver.
3. Remove the two screws of the gear lever cover and lift it upwards and backwards.
4. Unplug the connector for the central locking system switch.
5. Unplug the connectors of the seat heating switches (keep track of the left and right connector) and the cigarette lighter.
- 6.

Remove the rear part of the centre console by lifting it straight up.

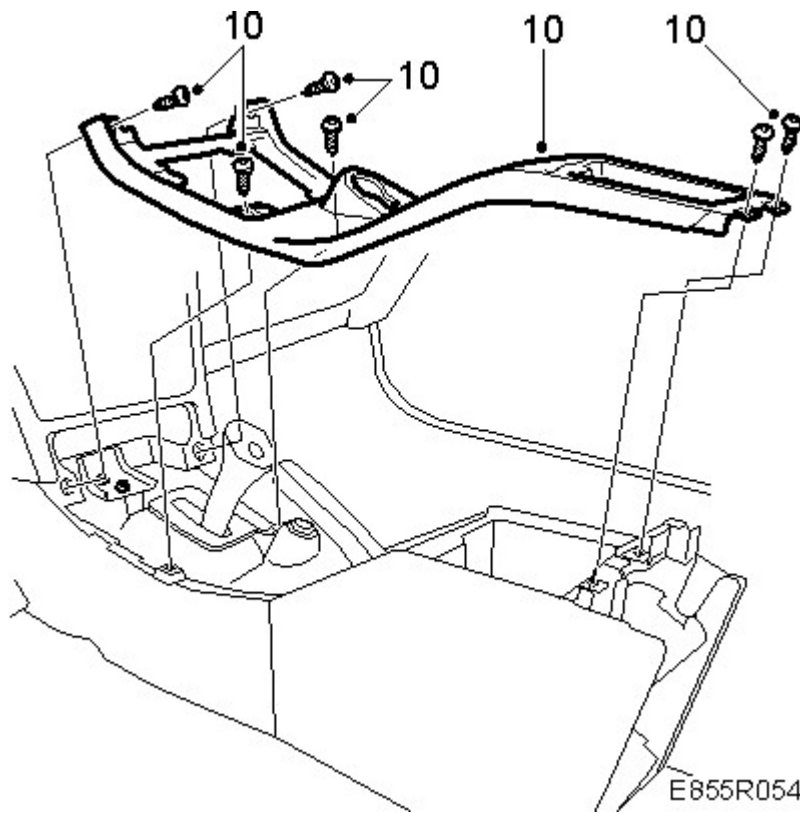


7. **Manual gearbox:** Engage reverse and remove the key.

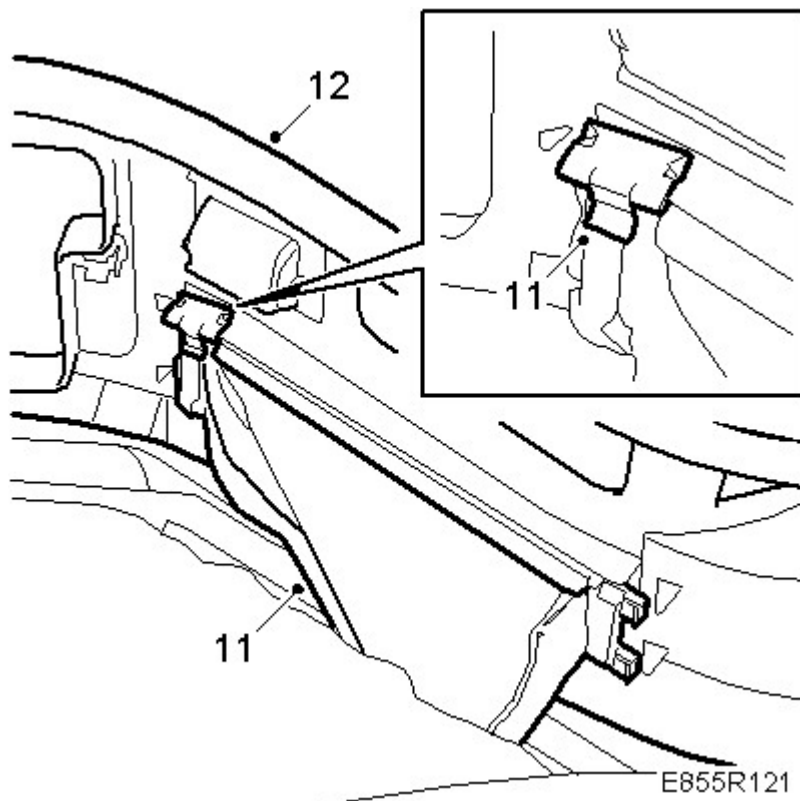
**Automatic transmission:** Select the P position and remove the key.

8. Turn the theft protection antenna unit clockwise, lift it (bayonet fitting) from the ignition switch and unplug the connector. Insert the key and engage neutral.
9. Remove the switches for the electric windows and unplug the connectors.
- 10.

Remove the screws holding the upper part of the centre console, 6 screws.

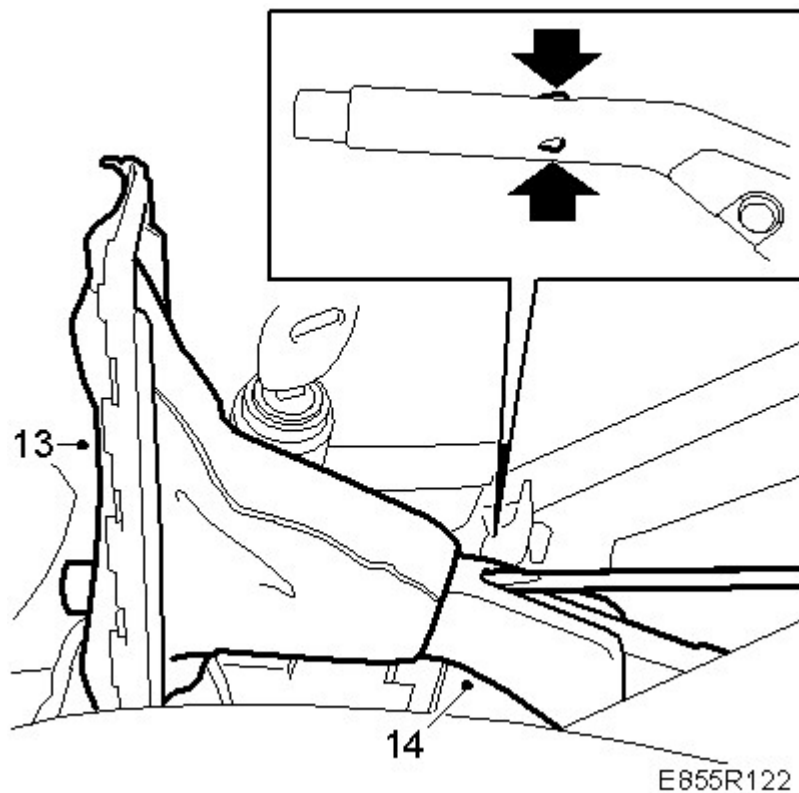


11. Remove the clip that holds the gaiter in place. Remove the gaiter from the upper part of the console.



12. Lift out the upper part of the centre console.

13. Pull the gaiter forwards over the lever (destructive removal).



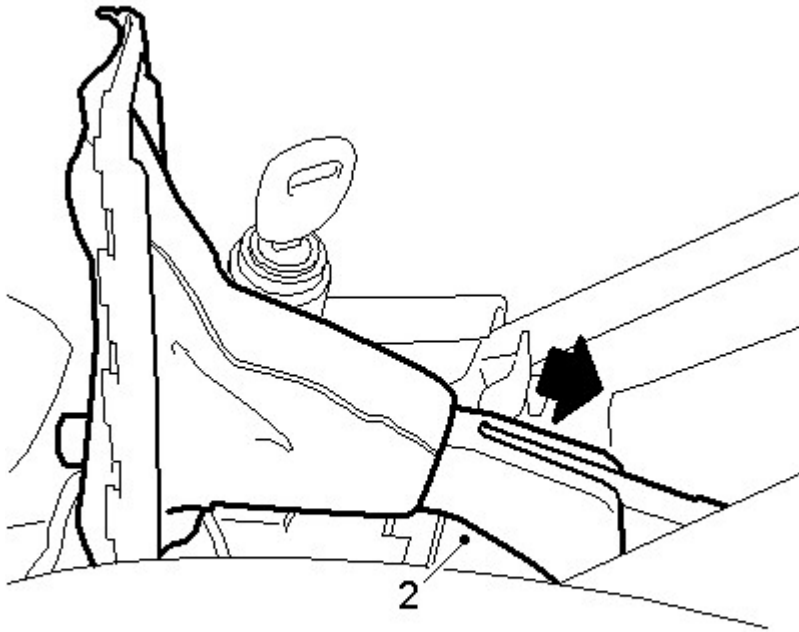
14. Prise off the plastic sleeve with a screwdriver.

#### To fit

1. Invert the gaiter over the sleeve and thread the sleeve onto the handbrake lever.

2.

Re-invert the gaiter and press the sleeve as far as possible onto the lever.



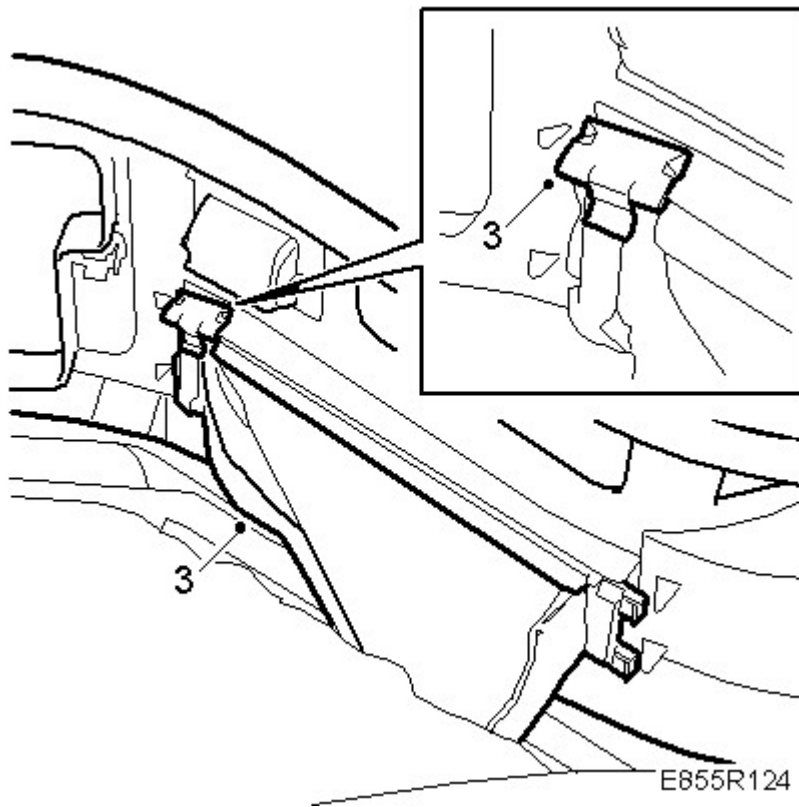
E855R123

3.

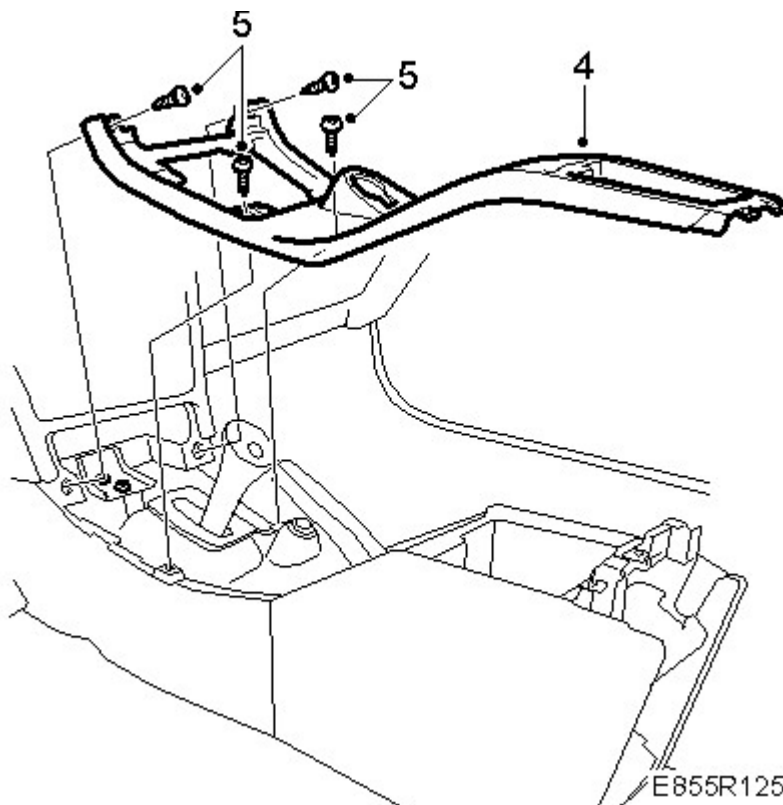
Fit the gaiter and press the clip to the upper part of the console into place.

**Note**

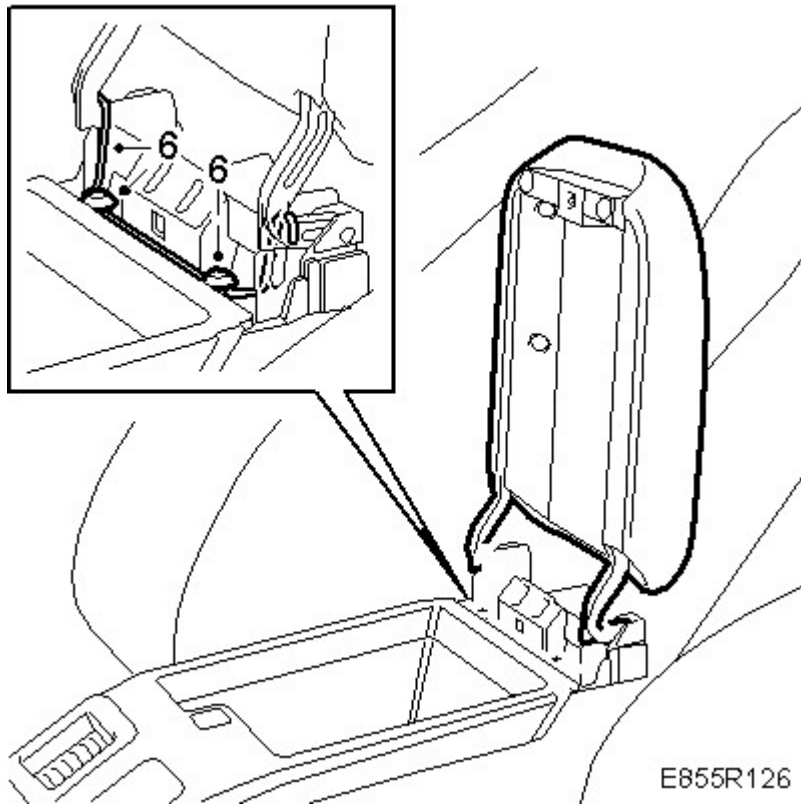
**Manual gearbox:** Ensure that the gear lever gaiter does not get caught.



4. Lift back the upper part of the centre console. At the same time, carefully position the leads. Be careful with the lead for the theft protection system.

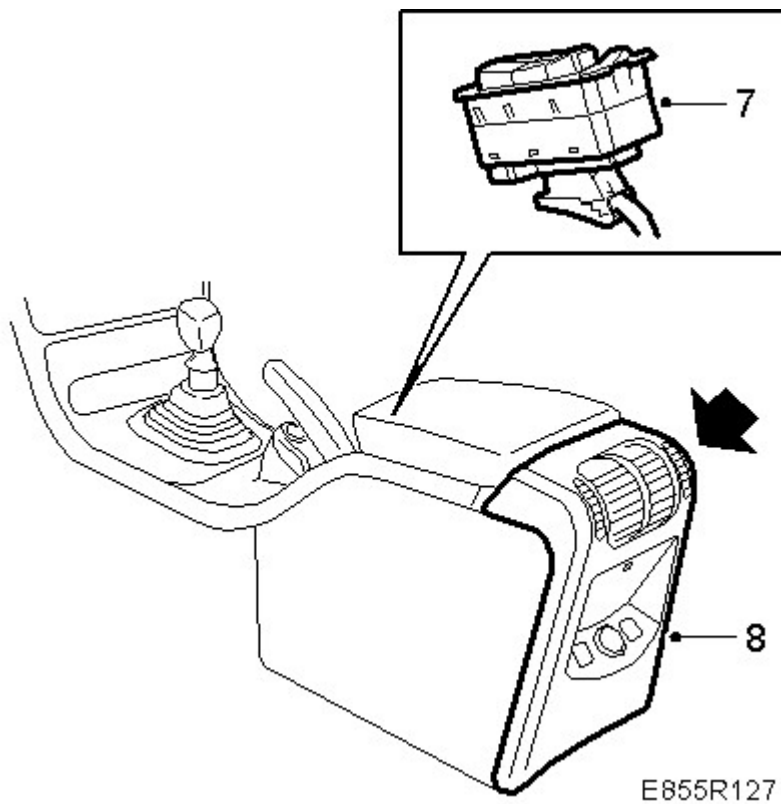


5. Screw the upper part of the centre console in place, 4 front screws.
6. Fit the spring and the two rear screws to the upper part of the centre console.



7.

Connect and refit the switch for the electric window lifts.



8. Refit the rear part of the centre console.

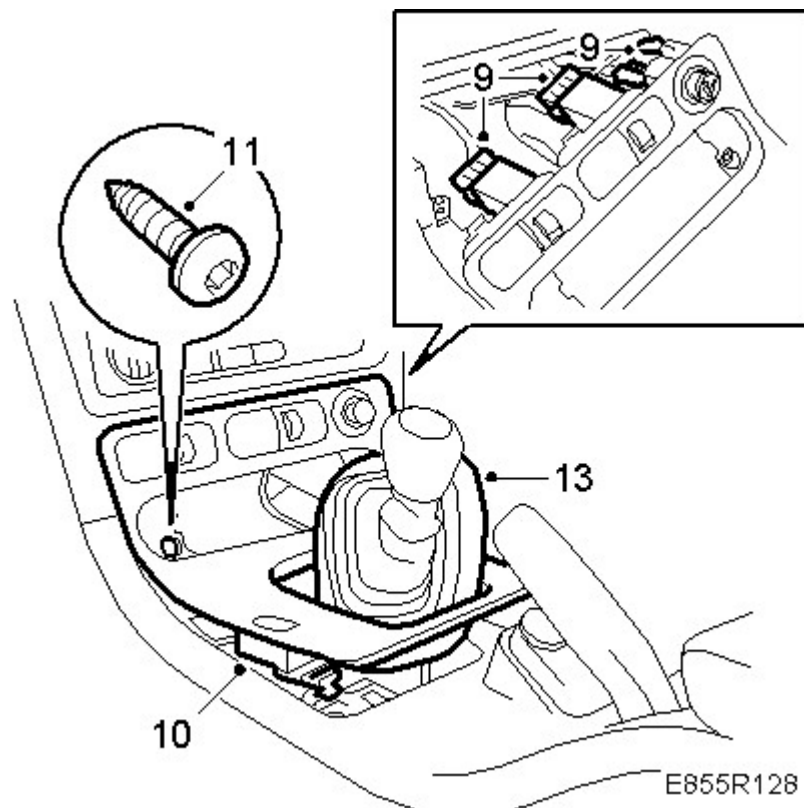
9.

Plug in the connectors of the cigarette lighter and heated seat switches.

**Note**

Make sure the left-hand and right-hand connectors are plugged in correctly.





10. Plug in the central locking switch connector.

11. Refit the gear lever cover, 2 clips at the back and 2 screws at the front.

12. Refit the compartment or [ashtray](#) with holder.

13. **Manual gearbox:** Fit the gear lever gaiter.

**Automatic transmission:** Fit the rim around the selector lever housing.

14. **Manual gearbox:** Engage reverse and remove the key.

**Automatic transmission:** Select the P position and remove the key.

15. Plug in the connector to the theft protection antenna unit. Refit the antenna unit (bayonet fitting).