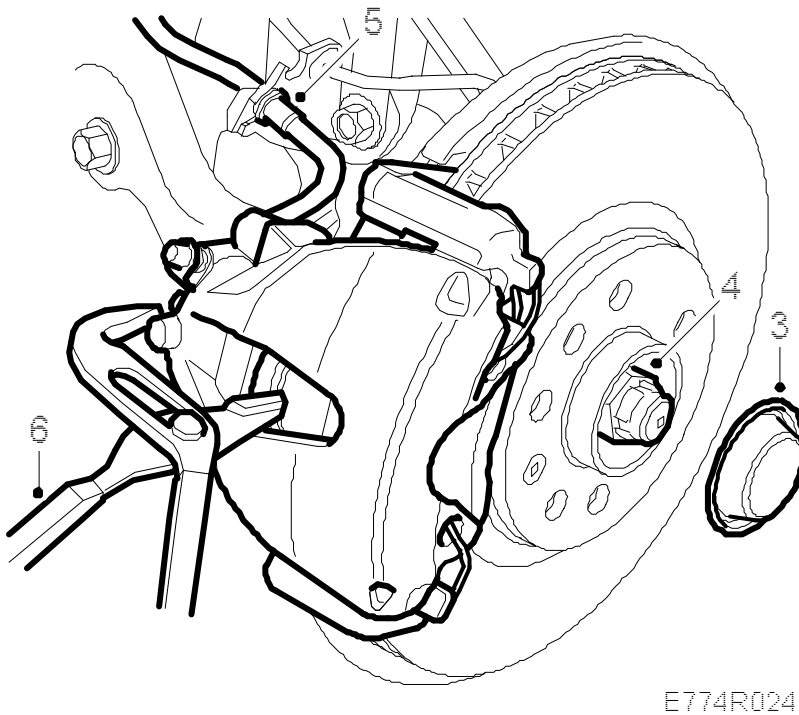


Front wheel hub

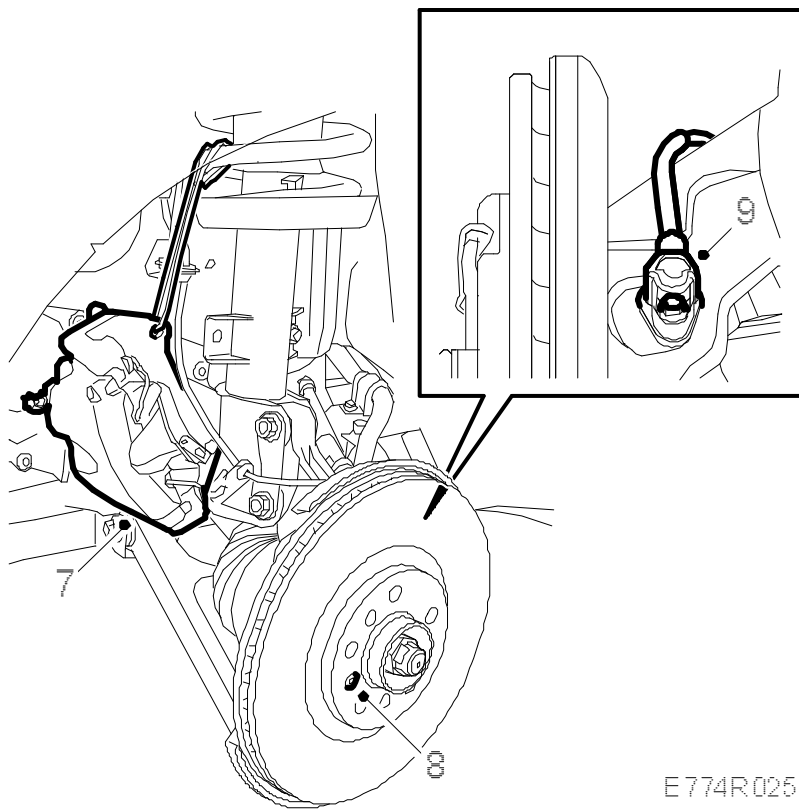
To remove

1. Raise the car. If a jack is used, the car must be supported on axle stands.
2. Remove the wheel.
3. Remove the protective cup from the wheel hub.



4. Remove the hub centre-nut.
5. Detach the brake hose from the clips.
6. Press back the brake piston using slip-joint pliers.
- 7.

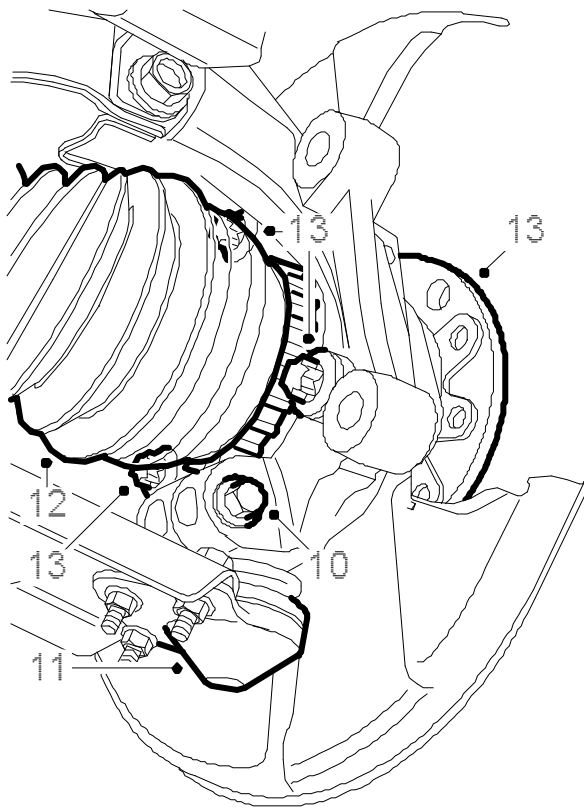
Remove the brake caliper and suspend it from the spring with suitable steel wire.



E774R025

8. Remove the brake disc lock screw and lift off the brake disc.
9. Remove the wheel sensor.
10. Remove the bolt securing the wishbone ball joint to the steering swivel member.
- 11.

Pull out the ball joint journal.



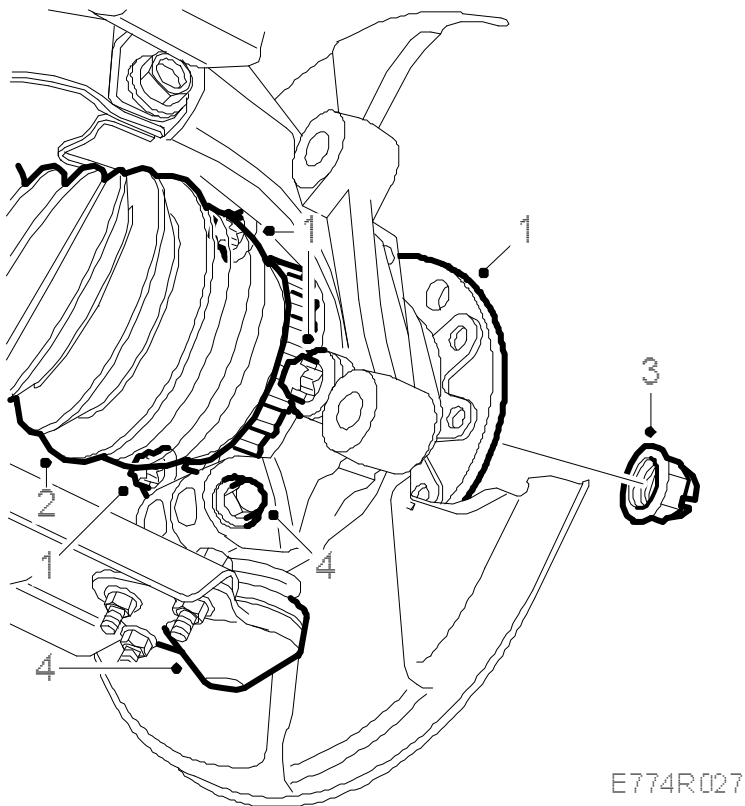
E774R026

12. Tap out the drive shaft from the hub and lift the hub and steering swivel member from the shaft.

Note

Take care so that the inboard universal joint does not separate.

13. Remove the three hub bolts. Lift off the hub and the disc back-plate.



1. Clean the contact surfaces and fit the brake shield and hub with three bolts.

Tightening torque: 90 Nm +45° (66 lbf ft +45°)

2. Fit the drive shaft to the hub.
3. Fit the hub centre nut and pull the shaft in place using the nut.

Important

Always fit a new hub-centre nut if it has been removed because the clamping force of the lock indentations will be reduced if the old one is refitted.

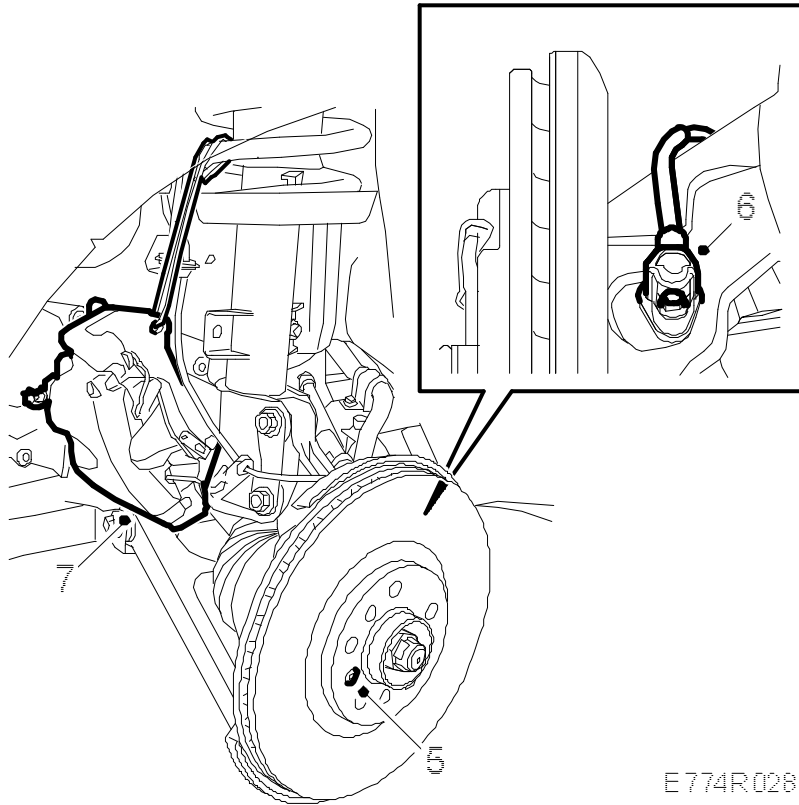
4. Fit the ball joint to the steering swivel member.

Note

Make sure the ball joint journal protrudes through the attachment.

Tightening torque: 49 Nm (36 lbf ft)

5. Put the brake disc in place and tighten its retaining bolt.



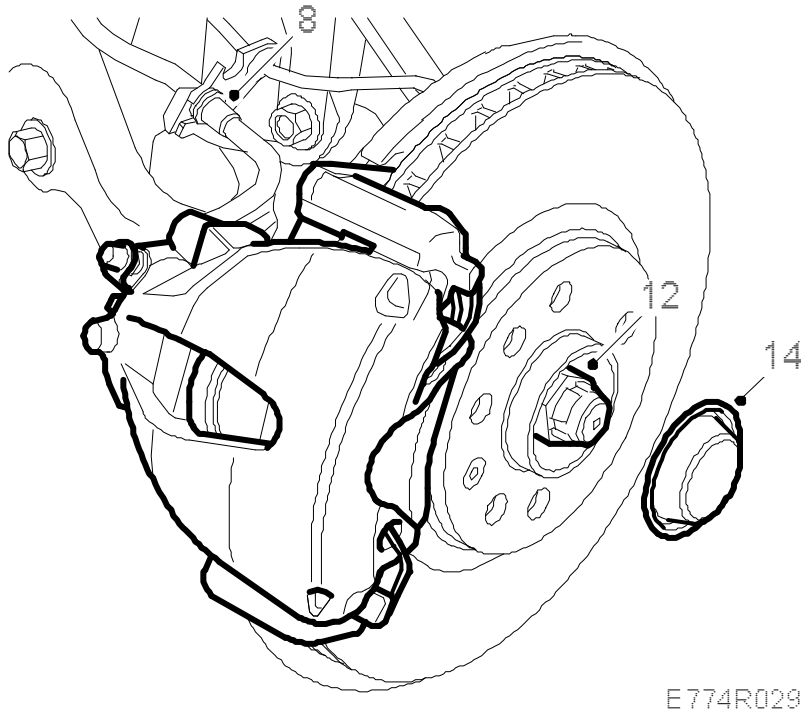
E 774R 028

6. Fit the wheel sensor.
7. Fit the brake caliper. Apply [74 96 268 Thread locking adhesive](#) to the bolts.

Tightening torque: 140 Nm +45° (103 lbf ft +45°)

- 8.

Fit the brake hose into the attachment and fit the clip.



9. Fit the clip to the wheel speed sensor cable.
10. Fit the wheel with two wheel bolts. The centre emblem on aluminium rims must be removed before fitting the wheel.
11. Lower the car so that wheels are on the ground.
12. Tighten the hub centre-nut.

Tightening torque: 230 Nm (170 lbf ft)

13. Raise the car and remove the wheel.
Fit the centre emblem.
14. Fit the protective cup to the wheel hub.
15. Fit the wheel. See [Wheels](#).

Tightening torques

aluminium rim 110 Nm (81 lbf ft)

pressed steel rim 50 Nm +2x90°, max. 110 Nm (37 lbf ft +2x90°, max. 81 lbf ft)

16. Depress the brake to press out the piston in the brake caliper.

