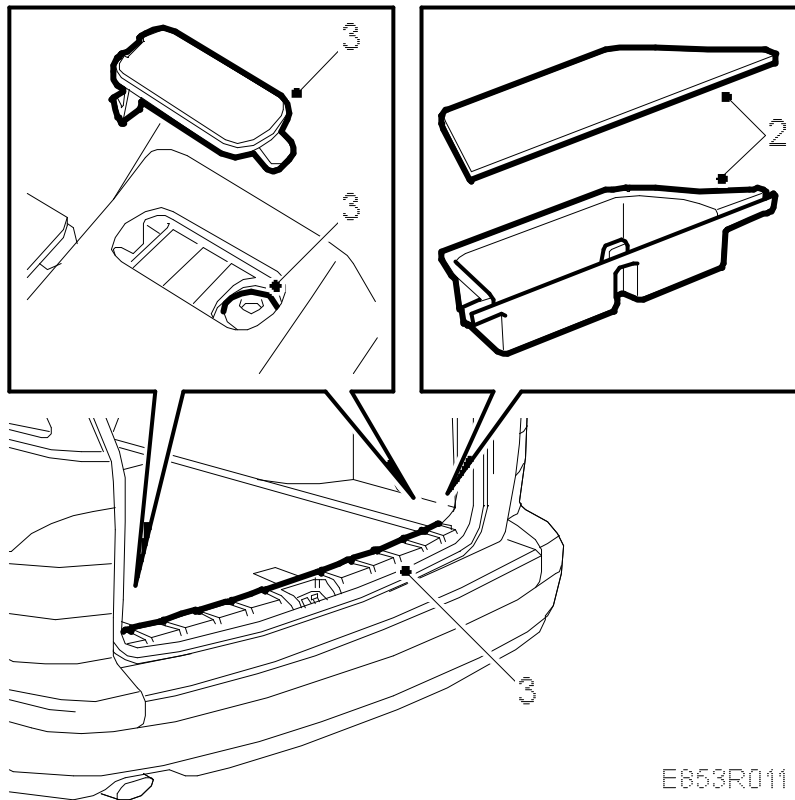
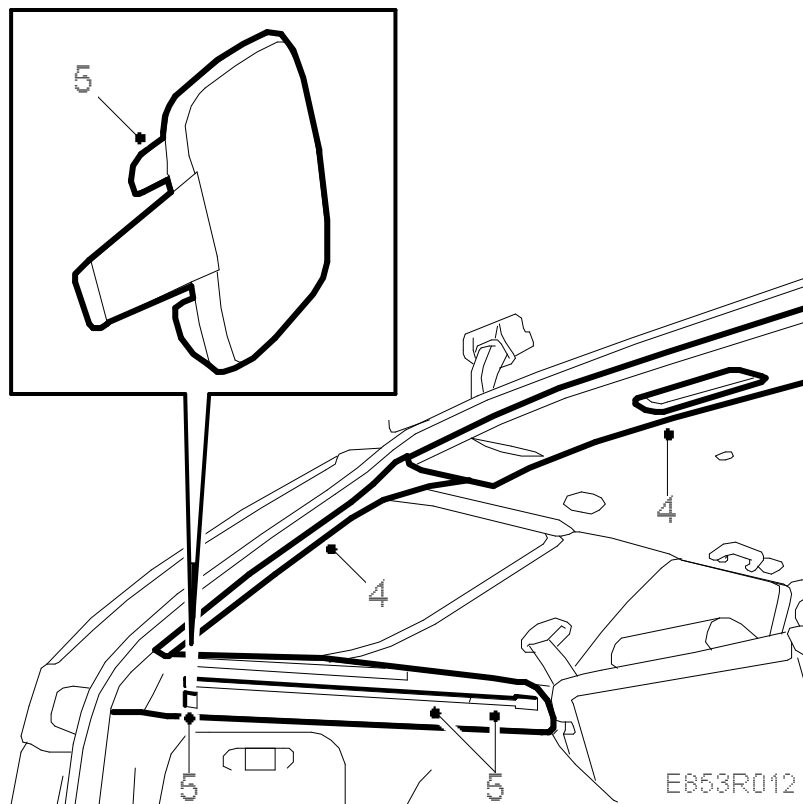


Rear belt, 5D**To remove**

E853R011

1. Remove any parcel shelf.
2. Lift off the cover over the storage compartment in the load bay and lift out the storage box.
3. Remove the scuff plate, 2 covers, screws and clips.
- 4.

Detach the rear edge of the roof covering so that clearance for the D-pillar trim is obtained.

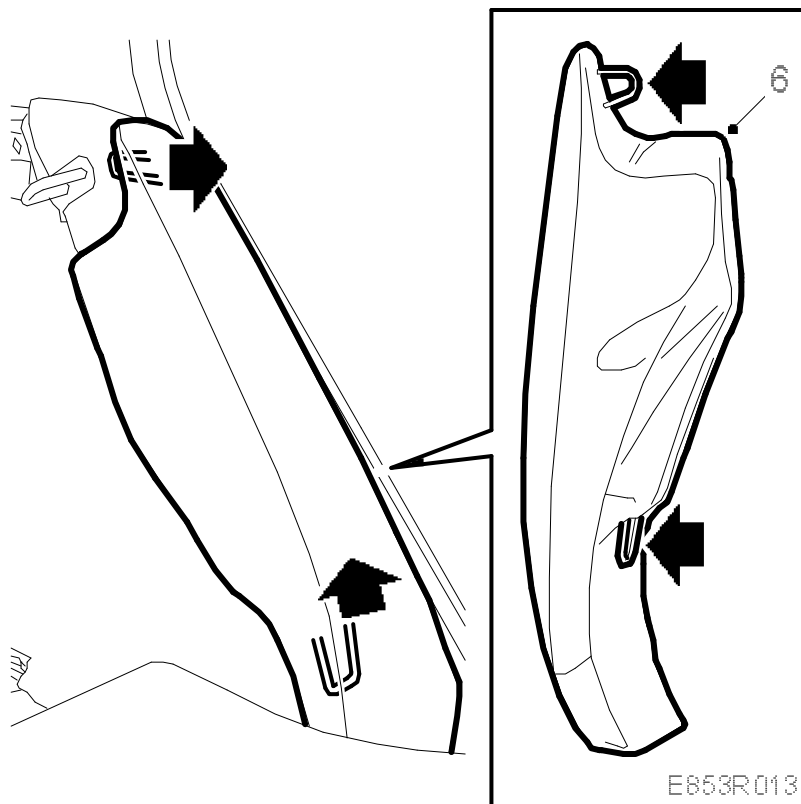


Remove the D-pillar trim, fastened with clips.

5. Remove the parcel shelf support, 1 cover, 3 screws and clips.

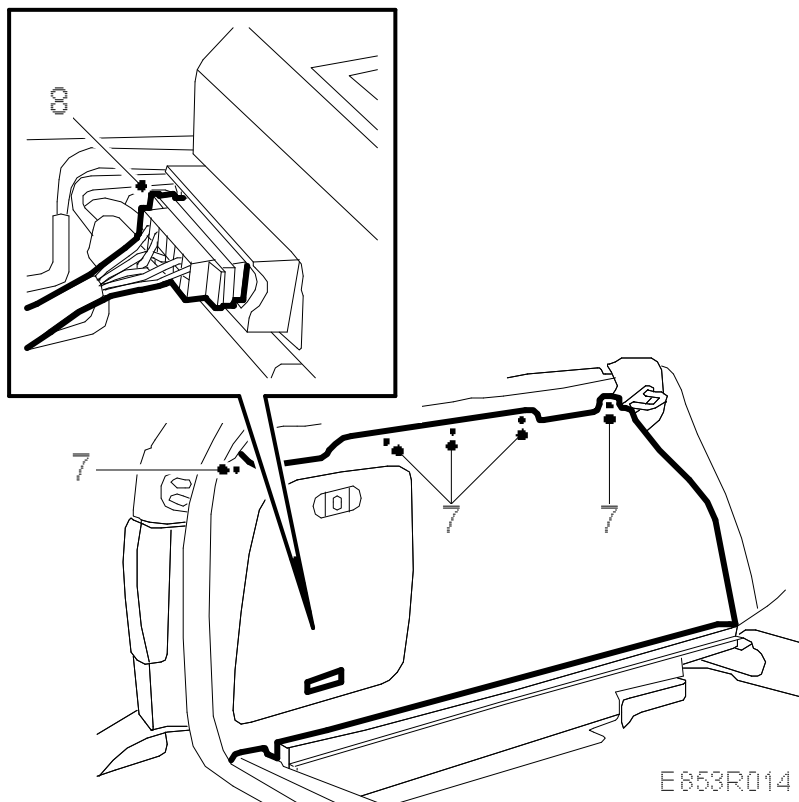
6.

Fold forward the seat cushion and backrest in the back seat.



Remove the side bolster by pulling the upper edge of the bolster to release the locking tab, and then unhook the lower edge.

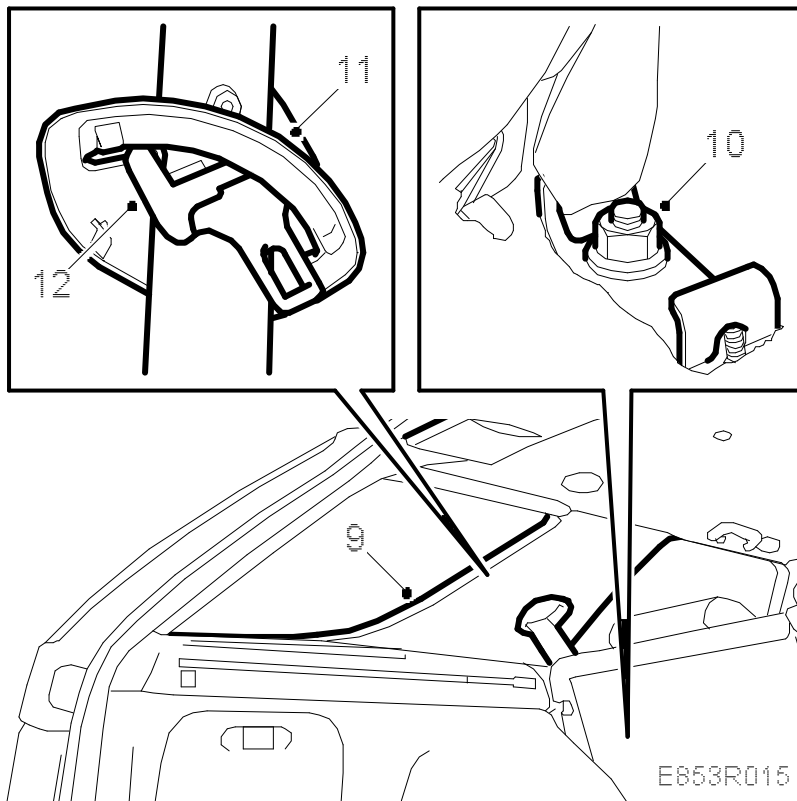
7. Remove the 5 screws securing the top of the side trim.



8. Fold out the side trim and unplug the connector for the CD player, if fitted.

Place the side trim to one side.

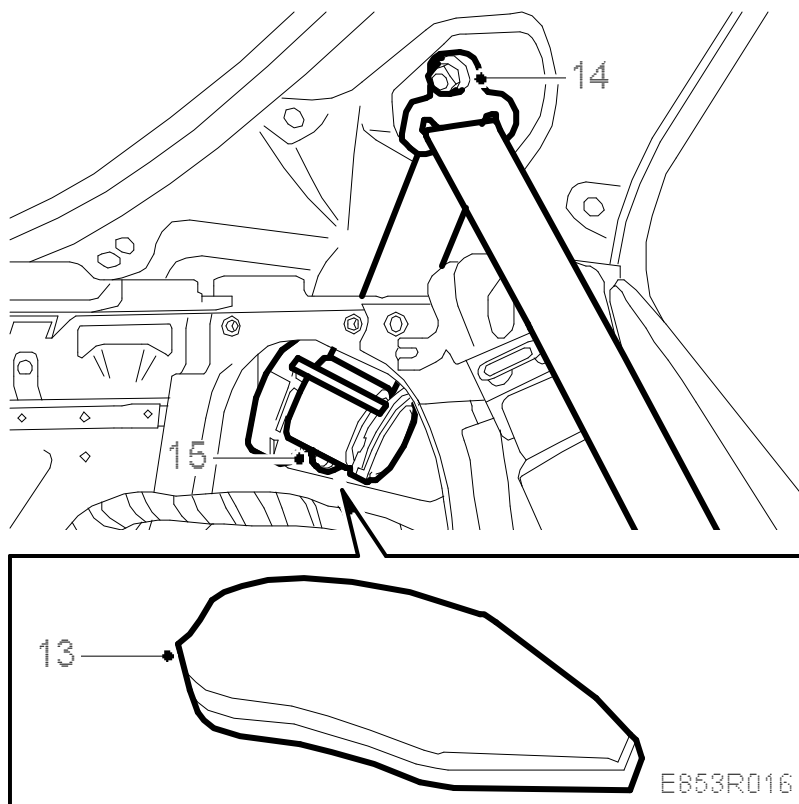
9. Pull off the C-pillar trim, starting at the upper edge.



Lift out the trim, guide pin in the lower rear edge.

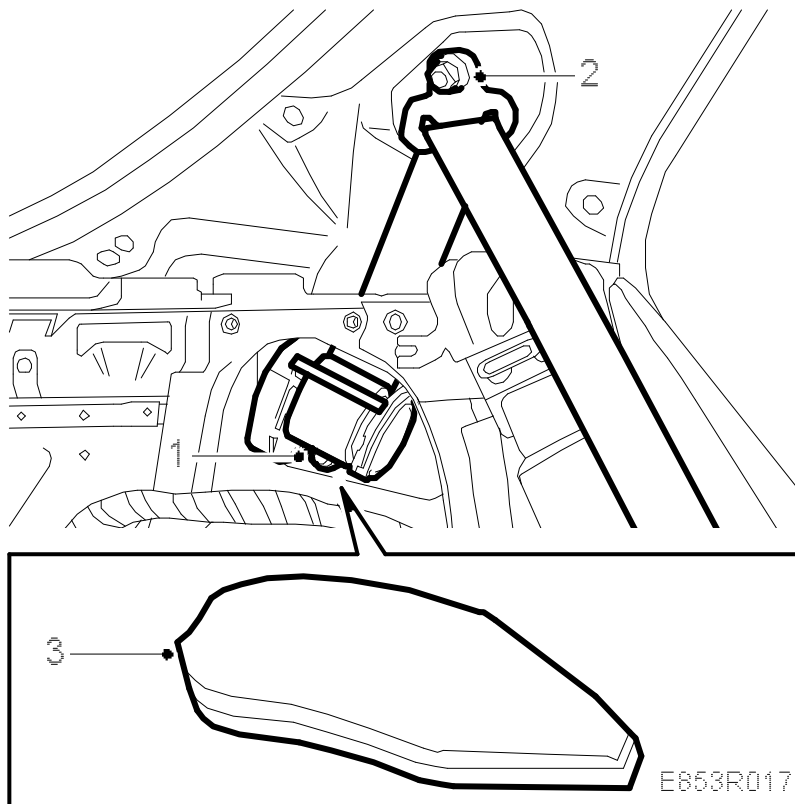
10. Unscrew the lower belt anchorage point.
11. Remove the seatbelt guide from the C-pillar trim and thread out the belt from the C-pillar trim.
12. Carefully thread through the locking tab and the belt anchorage point out from the seatbelt guide.
- 13.

Lift out the insulating cushion.



14. Undo the belt's strap guide.

15. Undo the inertia reel and lift out the belt.

**Note**

Use new nuts.

1. Guide the belt into place and fit the inertia reel on the C-pillar.

Tightening torque: 45 Nm (33 lbf ft)

Note

Use new nuts.

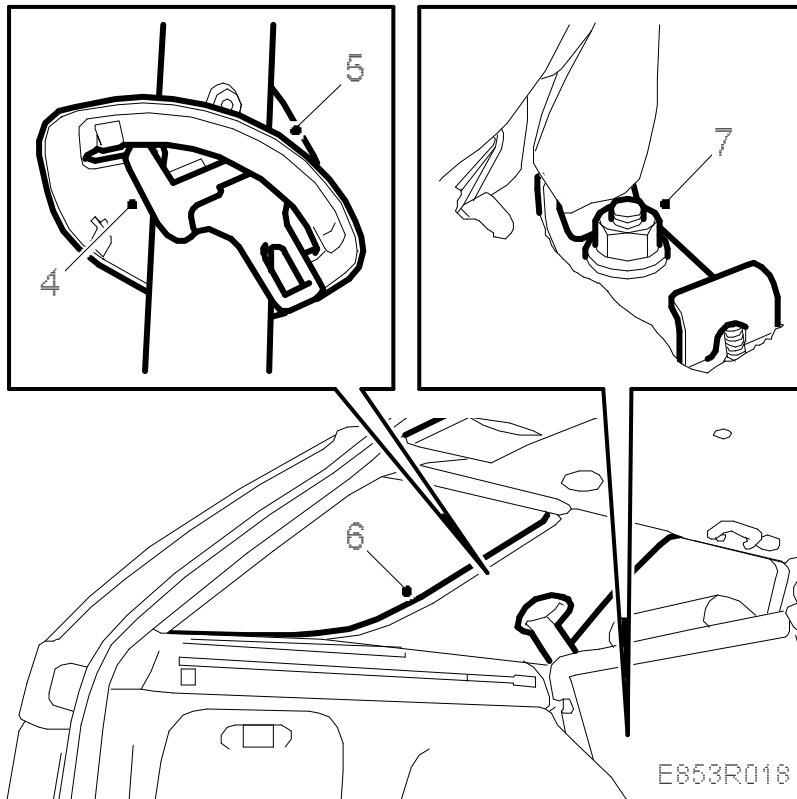
2. Fit the belt's strap guide.

Tightening torque: 45 Nm (33 lbf ft)

3. Insert the insulating cushion.

- 4.

Carefully thread in the locking tab and the belt anchorage point through the seatbelt guide.



5. Thread the belt and guide into the C-pillar trim, push the seatbelt guide into position on the C-pillar trim.
6. Position the C pillar trim by means of the locating pin and press the trim into place.

Note

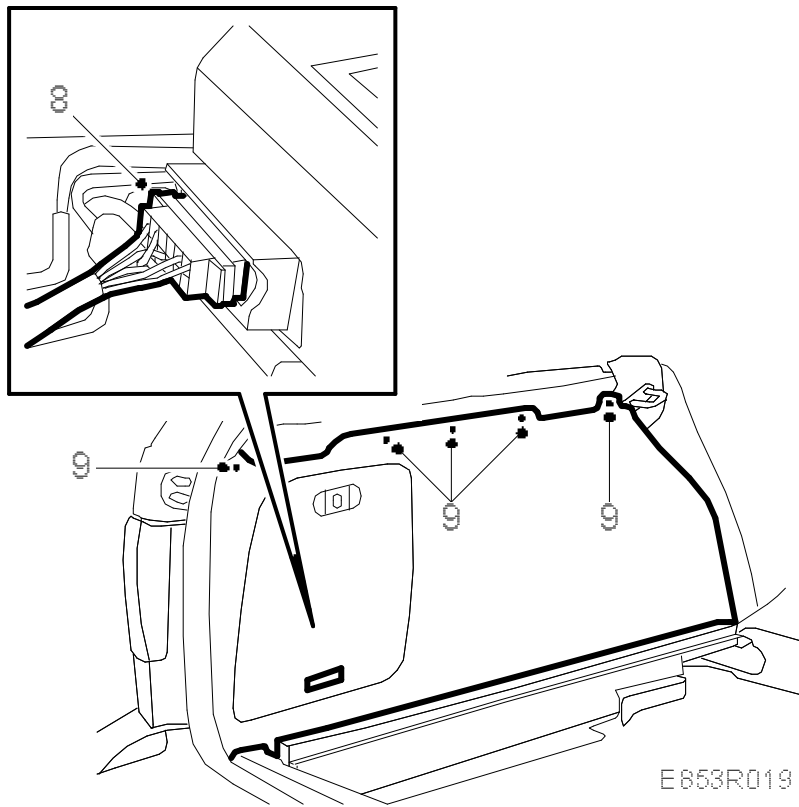
Use new nuts.

7. Fit the lower belt anchorage point, check that the guide pin is located correctly.

Tightening torque: 45 Nm (33 lbf ft)

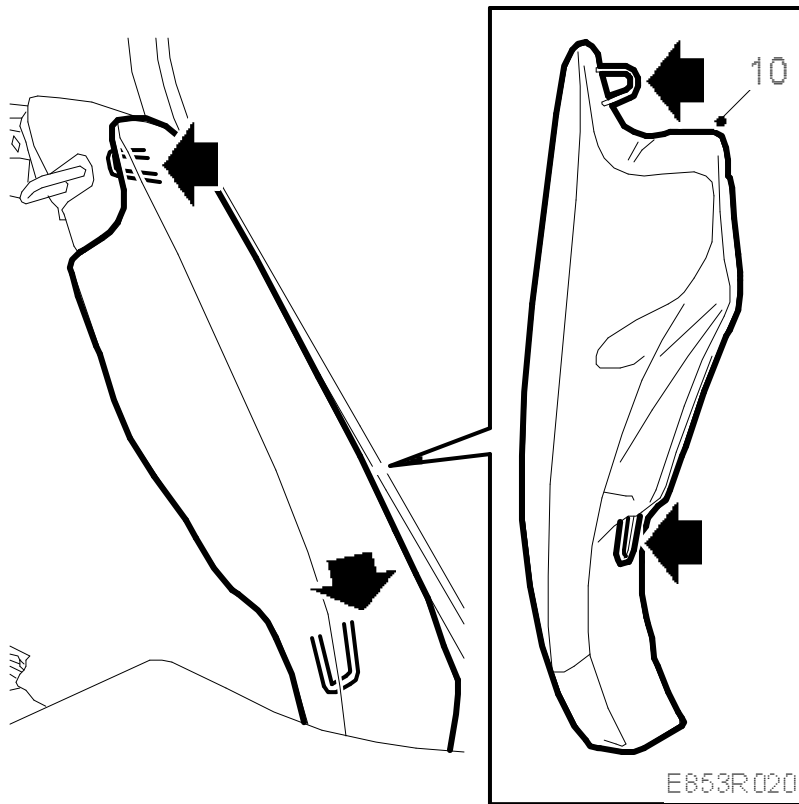
- 8.

Lift the side trim into place and plug in any connector to the CD player.



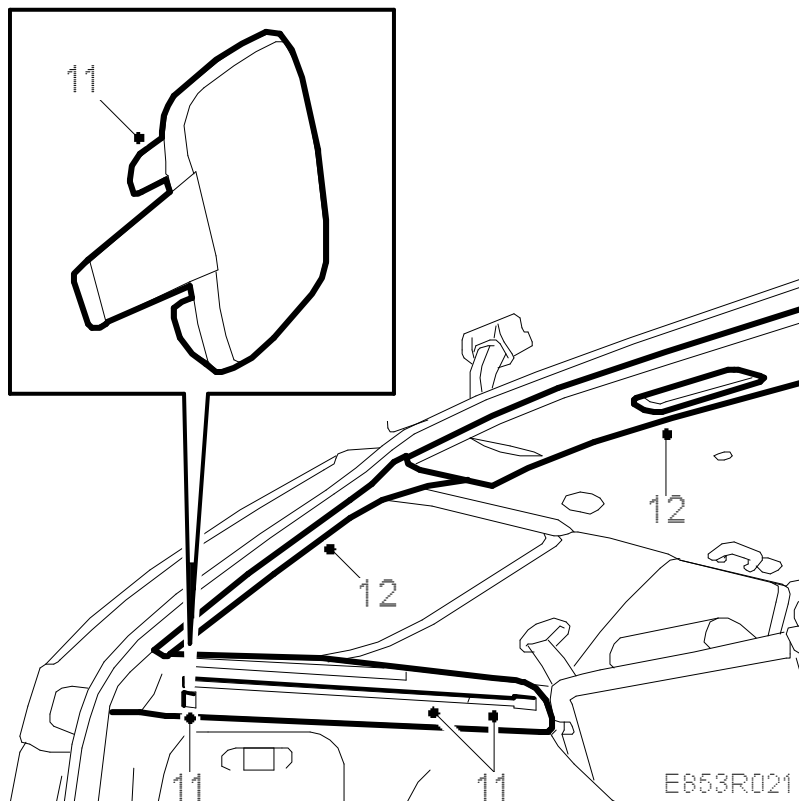
9. Fit the screws securing the top of the side trim, starting with the rearmost screw so that the trim will be properly located.
- 10.

Fit the side bolster by hooking in the lower edge and then pressing the upper catch into place.



Fold back the backrest and seat in the back seat.

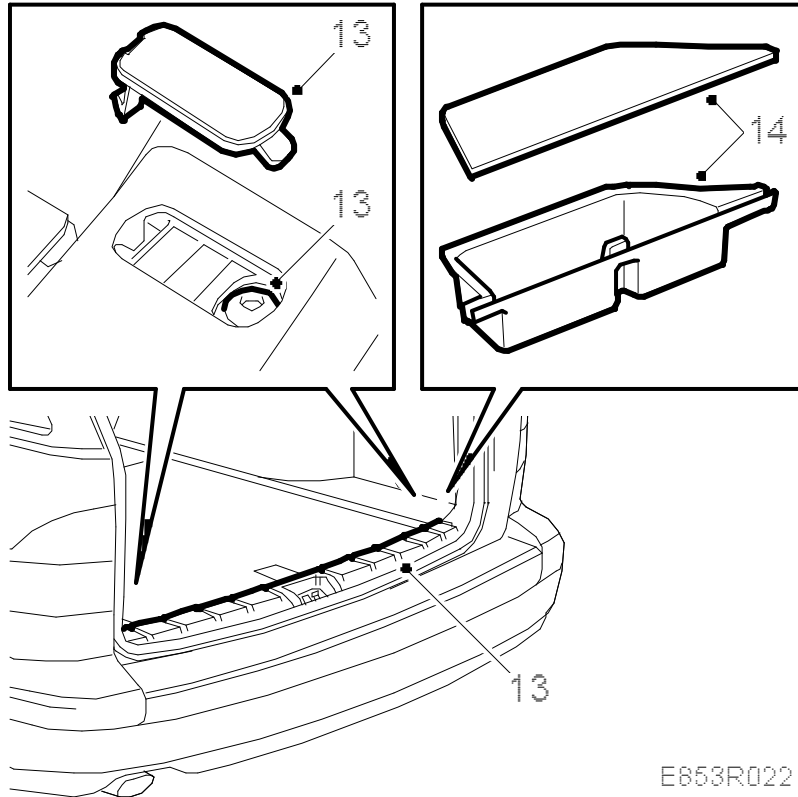
11. Fit the parcel shelf support, clips, 3 screws and 1 cover.



12. Fit the D-pillar trim, secured with clips. Press the rear roof covering into place.

Adjust the weatherstrip over the edges of the D-pillar trim and roof covering.

13. Fit the scuff plate, 4 clips, 2 screws and cover. Adjust the position of the weatherstrip over the edge of the scuff plate.



E853R022

14. Lift the storage box into place and fit the cover.

15. Fit any parcel shelf.