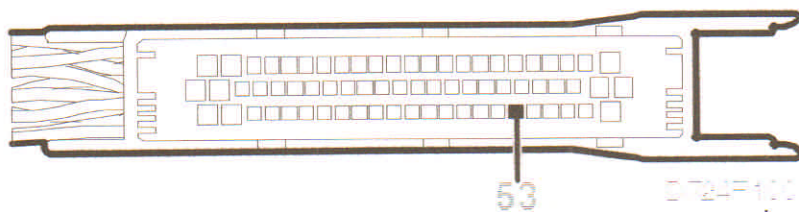
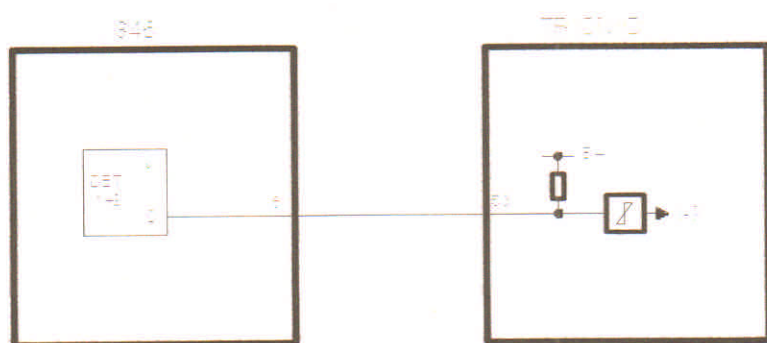


P1312**Important**

Read the introductory instructions below and then click on the tab to start the fault diagnosis procedure.

**Combustion Detection Cyl. 1+2. Open Circuit / Short to B+.****Fault symptoms**

- CHECK ENGINE.

On-Board Diagnostics**Type of diagnosis:**

- Continuous. But interrupted when fault criteria fulfilled and will not restart until next driving cycle.

Enable criteria

- General condition for this diagnostic trouble code: Atmospheric pressure must exceed 72 kPa as well as coolant and intake air temperature must exceed -7°C.
- Engine running. Main relay voltage exceeding 10V. Ignition synchronized.

Fault criteria

- Voltage exceeding 5V continuously during 200 combustions.

Dependents

- None

System reaction to a fault

- None

OK report

- Enable criteria fulfilled. Fault criteria for P1312 or P1334 not fulfilled within 300 combustions.

Fault handling: (For more information, see ➔ .)

- Type III.

Diagnostic help

Fault diagnosis concerns an electrical fault in the connecting leads.

- Combustion Detection Cyl 1+2 / Bank 1, unit %

Checking the wiring

Jiggle the wiring harness at several points and in different directions to detect intermittent breaks and short circuits. Observe the multimeter, diagnostic tool or test lamp during the

check.