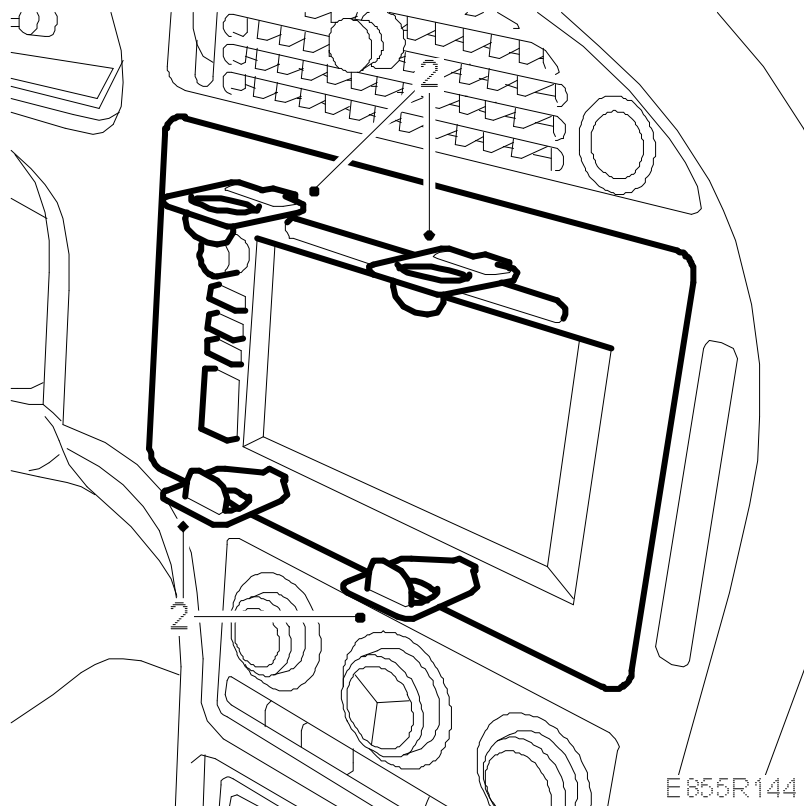


## Switch panel

### To remove

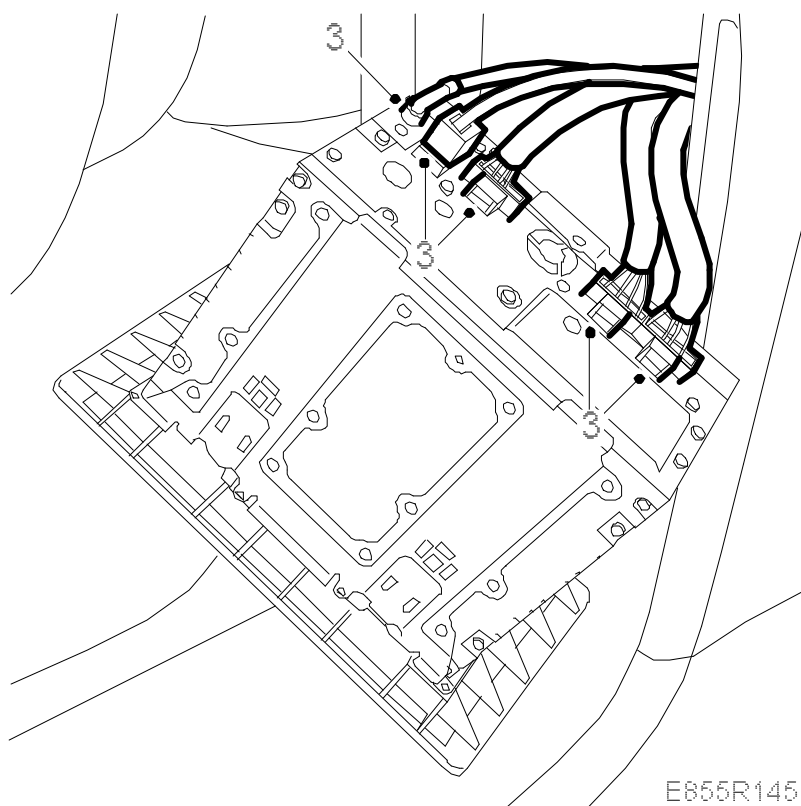
1. Ignition switch in the OFF position.
2. **Cars with navigation:** Remove the radio unit using [84 71 203 Removal tool](#).



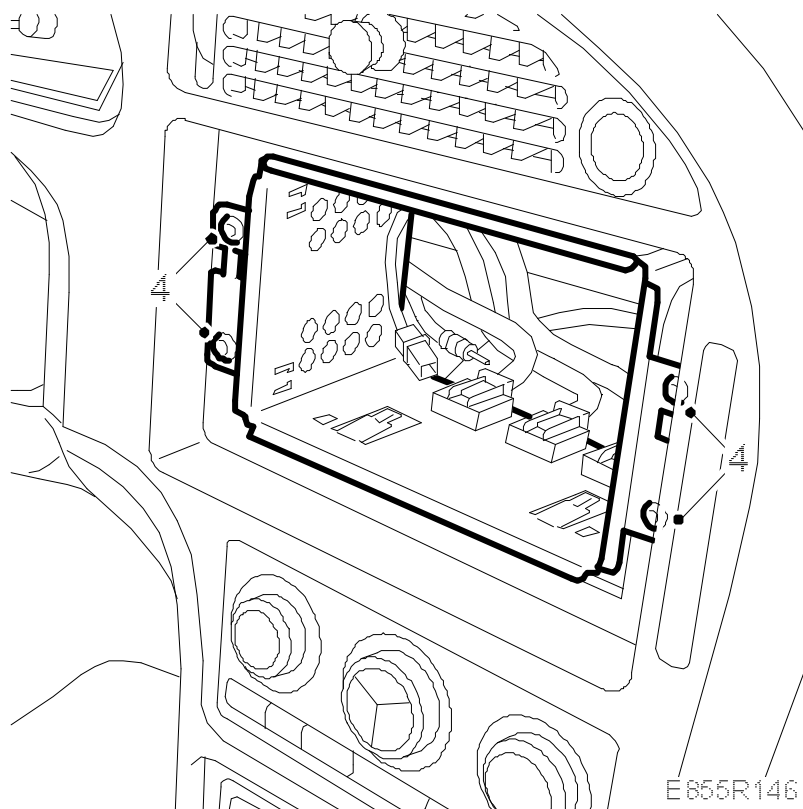
**Cars without navigation:** Remove the plugs carefully to avoid damaging the unit. Remove the screws. Pull out the unit.

3.

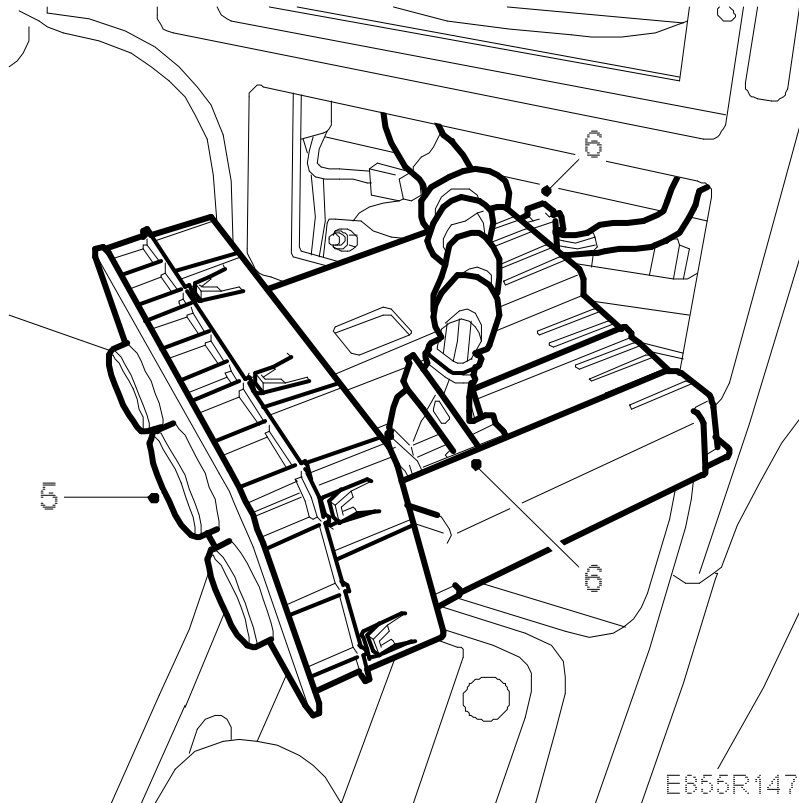
Unplug the connectors.



4. **Cars with navigation:** Remove the radio compartment.



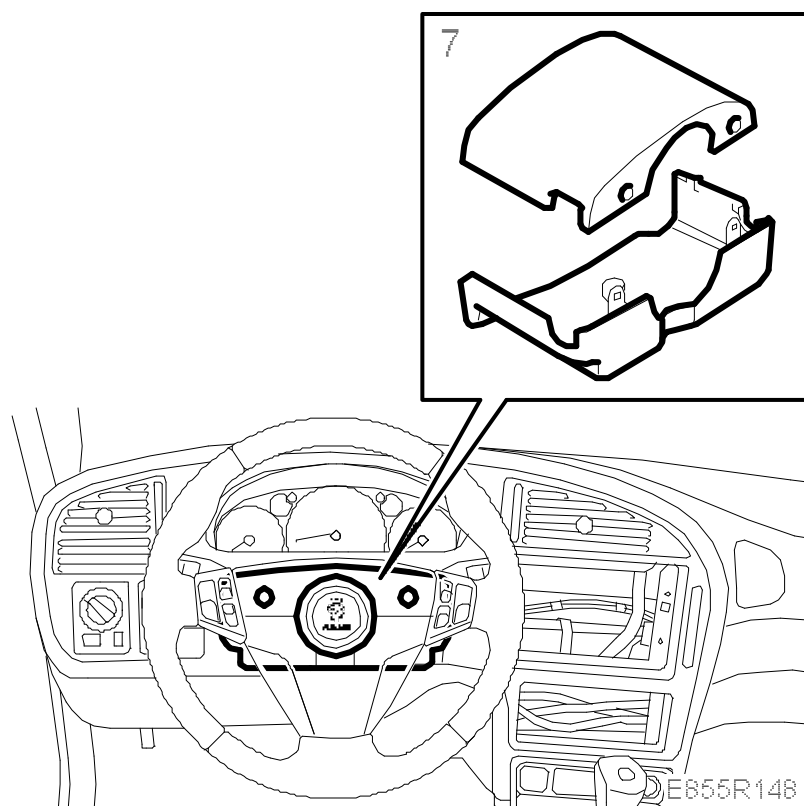
5. Remove the ACC panel.



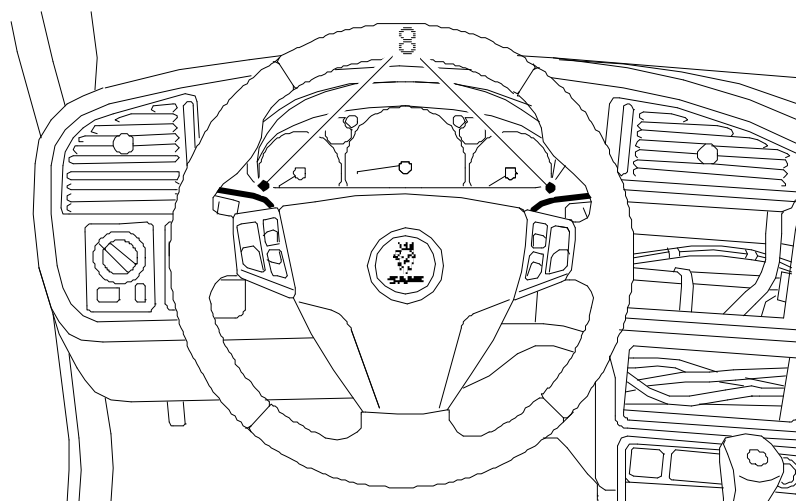
6. Unplug the connectors.

- 7.

Remove the upper and lower steering column cowls, 3 screws.

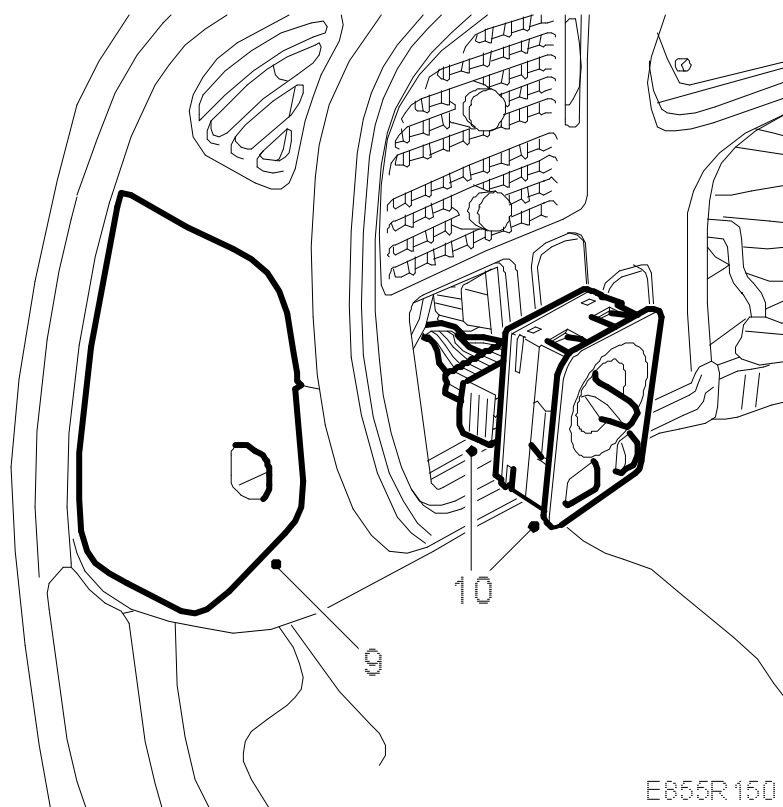


8. Remove the switches for the direction indicators and windscreen wipers. Let them hang loose.



E855R149

9. Remove the cover to the fuse holder.



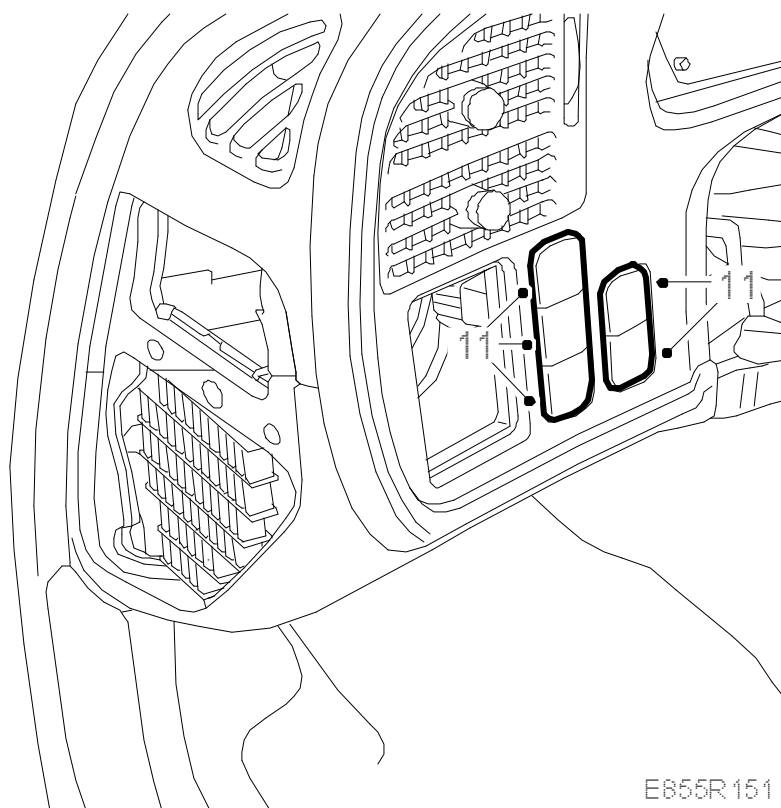
10. Remove the light control panel and unplug the connector.

- 11.

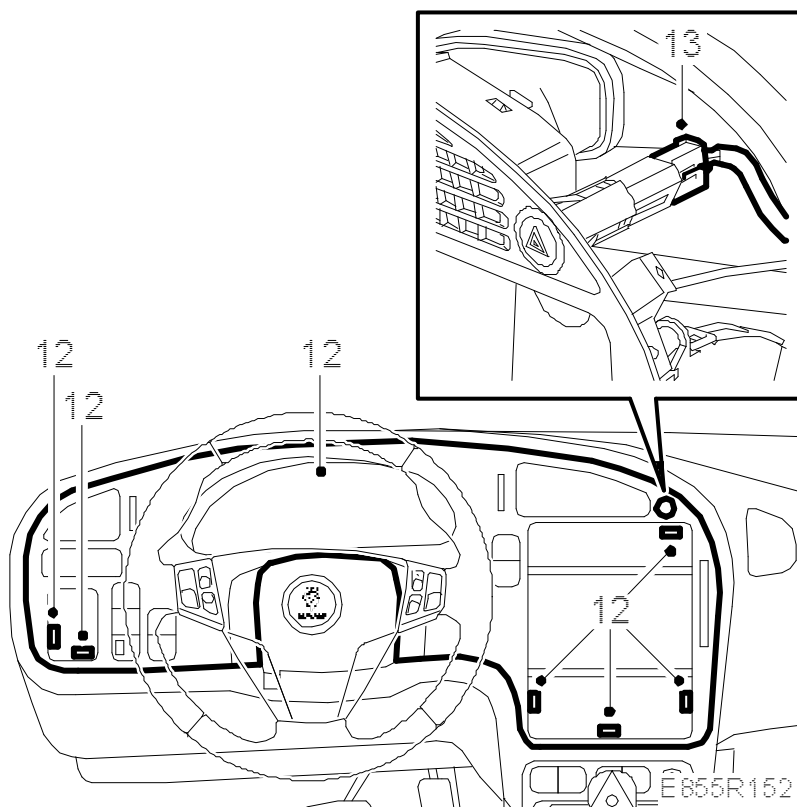
Remove the other switches and their connectors. Note the position of the switches in the panel.

**Note**

The connectors and the switches are colour coded.



12. Remove the switch panel.



13. Unplug the connector for the hazard flashers.
14. Lift away the switch panel.

### To fit

1. **When replacing the panel:** Transfer over air vents, cup holder and switch for hazard flashers to the new panel.

#### Note

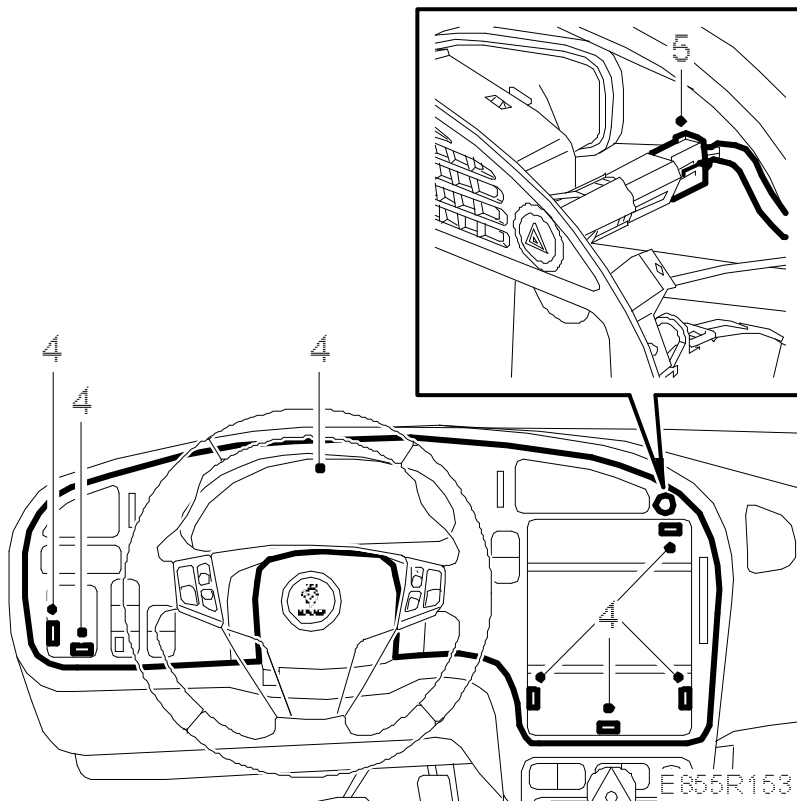
There is a marking that indicates which side of the hazard flashers should be up.

2. Lift the switch panel into place.
3. Check that the air ducts are positioned correctly.

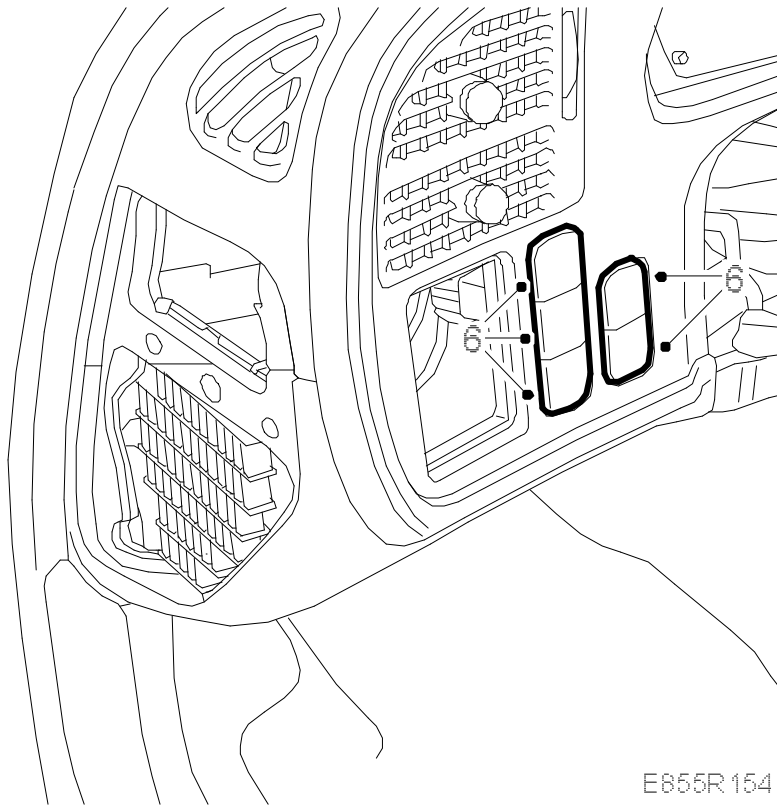
#### Note

Check that no contacts or wires have been trapped.

4. Fit the switch panel.



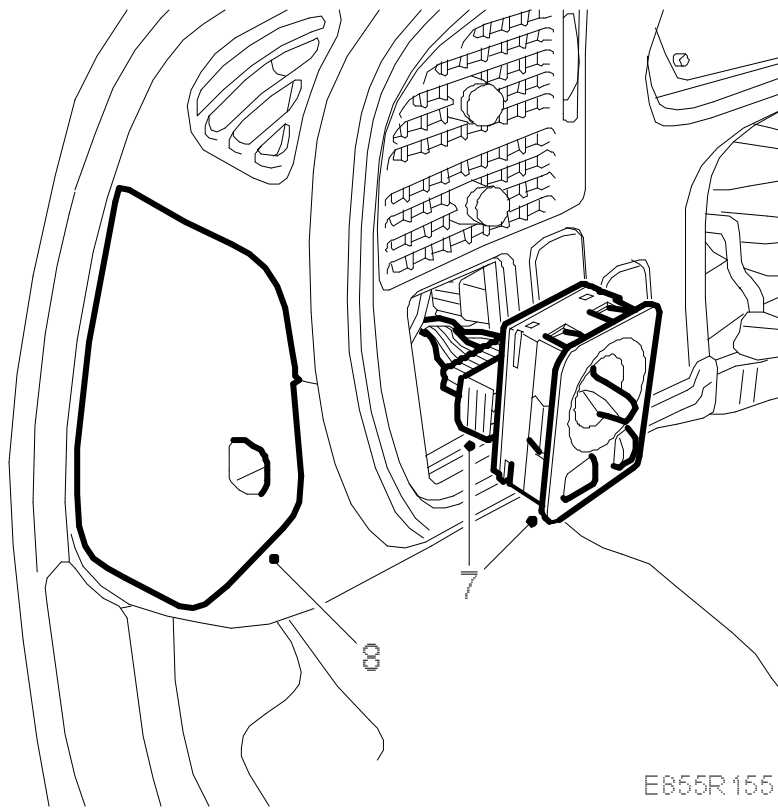
5. Plug in the connector for the hazard flashers.
6. Connect and fit other switches.



7.

Connect and fit the light control panel.

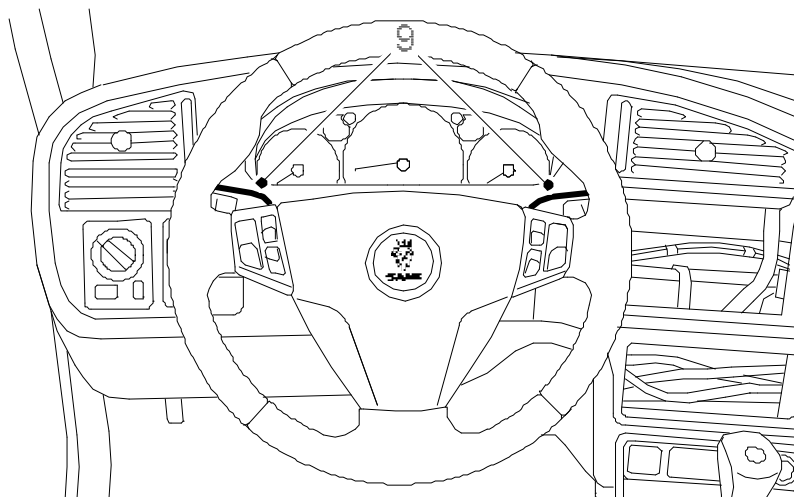




8. Fit the cover to the fuse holder.

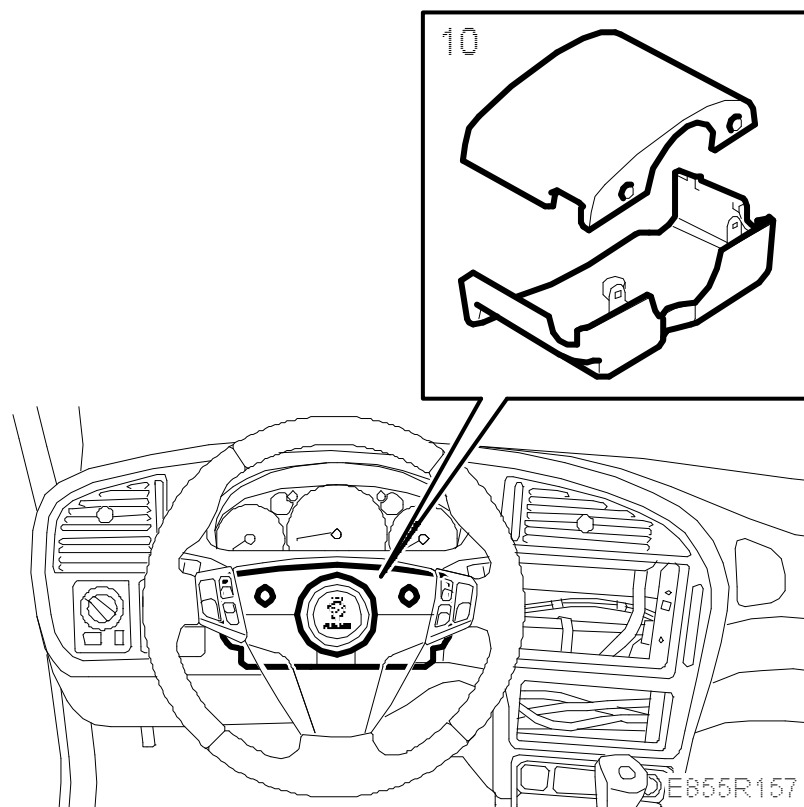
9.

Fit the switches for the direction indicators and windscreen wipers.



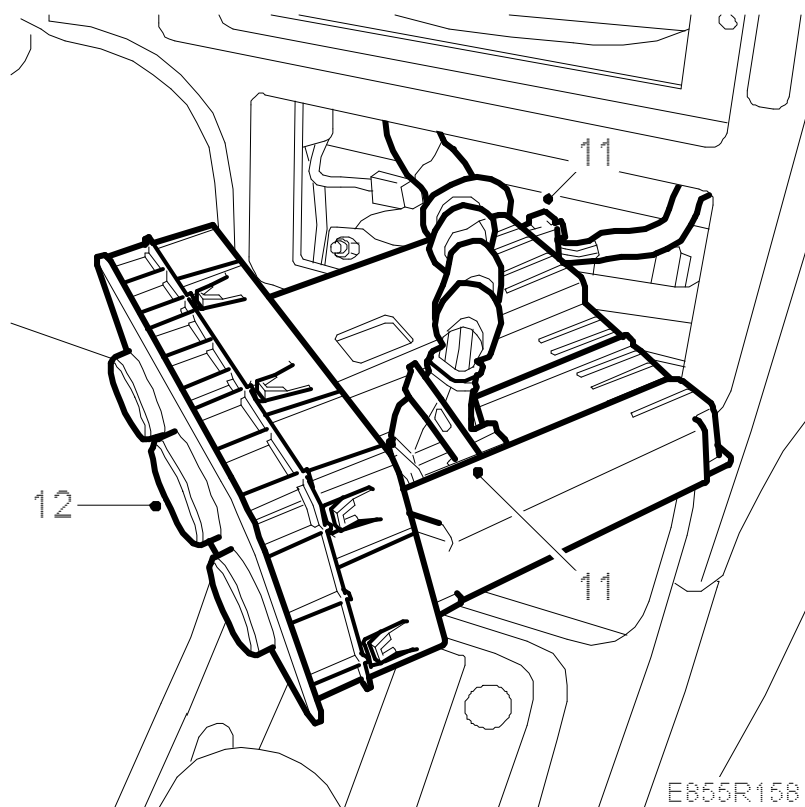
E855R156

10. Fit the upper and lower steering column covers.



E855R157

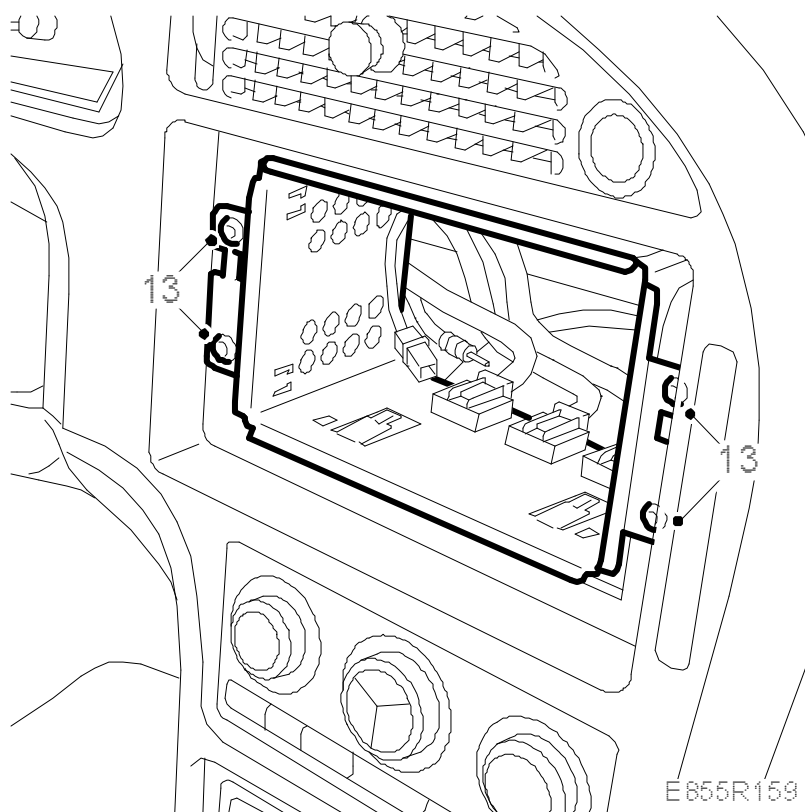
11. Plug in the connectors to the ACC panel.



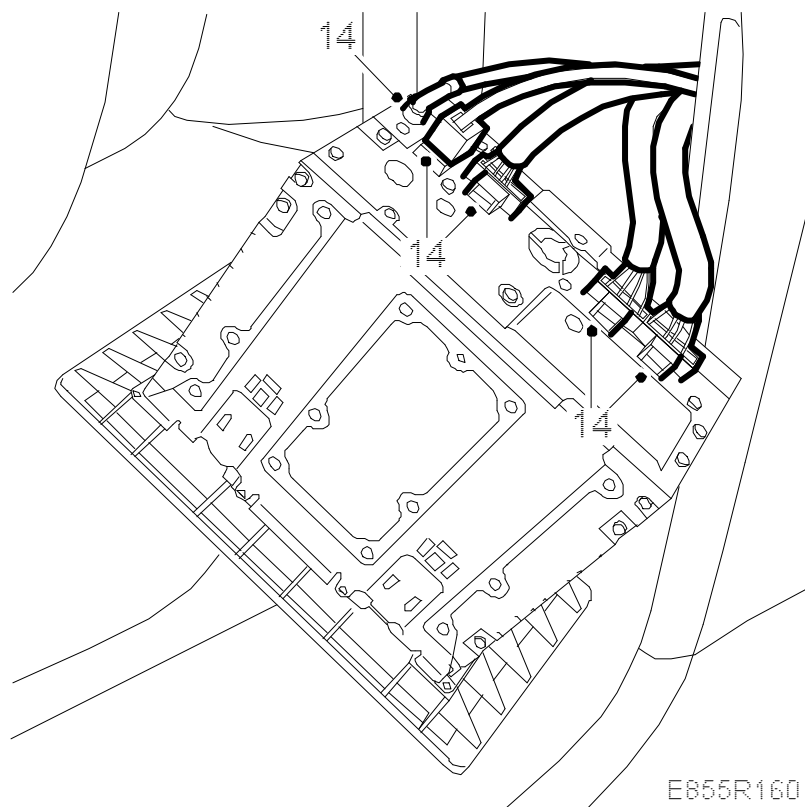
12. Fit the ACC panel.

13.

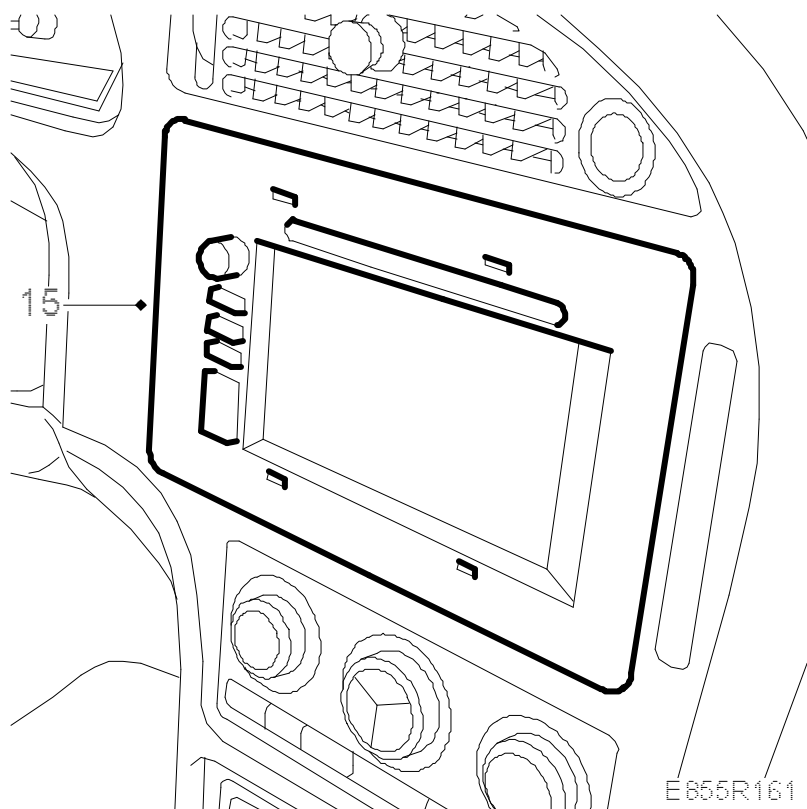
**Cars with navigation:** Fit the radio compartment.



14. Plug in the radio unit's connector.



## 15. Fit the radio unit.



**Cars without navigation:** Fit the screws. Fit the plugs, make sure that the plugs are guided into the grooves.